

L1 Antibody [clone CamVir-1] (V3062)

Catalog No.	Formulation	Size
V3062-100UG	0.2 mg/ml in 1X PBS with 0.1 mg/ml BSA (US sourced) and 0.05% sodium azide	100 ug
V3062-20UG	0.2 mg/ml in 1X PBS with 0.1 mg/ml BSA (US sourced) and 0.05% sodium azide	20 ug
V3062SAF-100UG	1 mg/ml in 1X PBS; BSA free, sodium azide free	100 ug



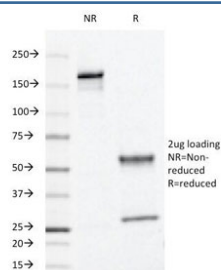
Citations (14)

Bulk quote request

Availability	1-3 business days
Species Reactivity	Type 16 of Human Papilloma Virus (HPV-16)
Format	Purified
Clonality	Monoclonal (mouse origin)
Isotype	Mouse IgG2a, kappa
Clone Name	CamVir-1
Purity	Protein G affinity chromatography
UniProt	P03101
Localization	Nuclear
Applications	Immunofluorescence : 0.5-1ug/ml Immunohistochemistry (FFPE) : 0.5-1ug/ml for 30 min at RT
Limitations	This L1 antibody is available for research use only.



IHC testing of formalin-fixed, paraffin-embedded human cervix with L1 antibody (clone CamVir-1)



SDS-PAGE Analysis of Purified, BSA-Free L1 Antibody (clone CamVir-1). Confirmation of Integrity and Purity of the Antibody.

Description

Application Notes

Optimal dilution of the L1 antibody should be determined by the researcher.

1. Staining of formalin-fixed tissues requires boiling tissue sections in 10mM Citrate buffer, pH 6.0, for 10-20 min followed by cooling at RT for 20 min.

Immunogen

Human papilloma virus type 16, major capsid protein L1, was used as the immunogen for the L1 antibody. The epitope has been localized to AA 204-210. (Ref 1)

Storage

Store the L1 antibody at 2-8oC (with azide) or aliquot and store at -20oC or colder (without azide).

References (1)