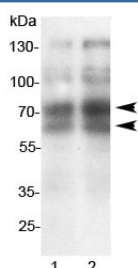


## L-Selectin Antibody / CD62L (R30426)

Catalog No.	Formulation	Size
R30426	0.5mg/ml if reconstituted with 0.2ml sterile DI water	100 ug

**Bulk quote request**

<b>Availability</b>	1-3 business days
<b>Species Reactivity</b>	Mouse, Rat
<b>Format</b>	Antigen affinity purified
<b>Clonality</b>	Polyclonal (rabbit origin)
<b>Isotype</b>	Rabbit IgG
<b>Purity</b>	Antigen affinity
<b>Buffer</b>	Lyophilized from 1X PBS with 2.5% BSA and 0.025% sodium azide/thimerosal
<b>UniProt</b>	P18337
<b>Applications</b>	Western Blot : 0.5-1ug/ml
<b>Limitations</b>	This L-Selectin antibody is available for research use only.



Western blot testing of 1) rat spleen and 2) mouse spleen lysate with L-Selectin antibody. Expected/observed molecular weight: 42~95kDa depending on level of glycosylation.

## Description

L-Selectin, also known as CD62L, is a cell adhesion molecule found on leukocytes. It belongs to the selectin family of proteins, which recognize sialylated carbohydrate groups. It is cleaved by ADAM17. SELL/L-selectin is a cell surface component that is a member of a family of adhesion/homing receptors which play important roles in leukocyte-endothelial cell interactions. The molecule is composed of multiple domains: one homologous to lectins, one to epidermal growth factor, and two to the consensus repeat units found in C3/C4 binding proteins. L-selectin acts as a homing receptor for leukocytes to enter secondary lymphoid tissues via high endothelial venules. Ligands present on endothelial cells will bind to leukocyte expressing L-selectin, slowing leukocyte trafficking through the blood, and facilitating entry into a secondary lymphoid organ at that point.

## Application Notes

The stated application concentrations are suggested starting amounts. Titration of the L-Selectin antibody may be required due to differences in protocols and secondary/substrate sensitivity.

## Immunogen

An amino acid sequence from the middle region of mouse L-Selectin (KEDCVEIYIKRERDSGK) was used as the immunogen for this L-Selectin antibody (100% rat homology).

## Storage

After reconstitution, the L-Selectin antibody can be stored for up to one month at 4°C. For long-term, aliquot and store at -20°C. Avoid repeated freezing and thawing.