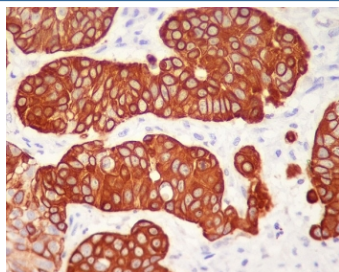


## KRT5 Antibody / Cytokeratin 5 / C-terminal region [clone AGD-11] (RQ5410)

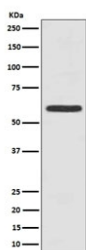
Catalog No.	Formulation	Size
RQ5410	Antibody in PBS with 0.02% sodium azide, 50% glycerol and 0.4-0.5mg/ml BSA	100 ul

[Bulk quote request](#)

Availability	1-2 weeks
Species Reactivity	Human
Format	Purified
Clonality	Rabbit Monoclonal
Isotype	Rabbit IgG
Clone Name	AGD-11
Purity	Affinity purified
UniProt	P13647
Localization	Cytoplasmic
Applications	Western Blot : 1:500-1:2000 Immunohistochemistry (FFPE) : 1:50-1:200
Limitations	This KRT5 antibody is available for research use only.



IHC staining of FFPE human urothelial carcinoma with KRT5 antibody. HIER: boil tissue sections in pH6, 10mM citrate buffer, for 10-20 min and allow to cool before testing.



Western blot testing of human A431 cell lysate with KRT5 antibody. Predicted molecular weight: 58-62 kDa.

## Description

The protein encoded by the KRT5 gene is a member of the keratin gene family. The type II cytokeratins consist of basic or neutral proteins which are arranged in pairs of heterotypic keratin chains coexpressed during differentiation of simple and stratified epithelial tissues. This type II cytokeratin is specifically expressed in the basal layer of the epidermis with family member KRT14. Mutations in these genes have been associated with a complex of diseases termed epidermolysis bullosa simplex. The type II cytokeratins are clustered in a region of chromosome 12q12-q13. [RefSeq]

## Application Notes

Optimal dilution of the KRT5 antibody should be determined by the researcher.

## Immunogen

A synthetic peptide specific to the C-terminal region of human Cytokeratin 5 / KRT5 was used as the immunogen for the KRT5 antibody.

## Storage

Store the KRT5 antibody at -20oC.