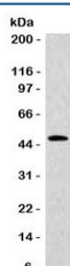


## KRT20 Antibody / Cytokeratin 20 / CK20 [clone CTKN20-1] (V7290)

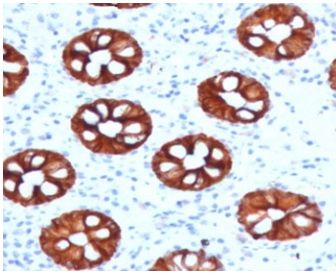
Catalog No.	Formulation	Size
V7290-100UG	0.2 mg/ml in 1X PBS with 0.1 mg/ml BSA (US sourced) and 0.05% sodium azide	100 ug
V7290-20UG	0.2 mg/ml in 1X PBS with 0.1 mg/ml BSA (US sourced) and 0.05% sodium azide	20 ug
V7290SAF-100UG	1 mg/ml in 1X PBS; BSA free, sodium azide free	100 ug
V7290IHC-7ML	Prediluted in 1X PBS with 0.1 mg/ml BSA (US sourced) and 0.05% sodium azide; *For IHC use only*	7 ml

[Bulk quote request](#)

<b>Availability</b>	1-3 business days
<b>Species Reactivity</b>	Human; other species not tested.
<b>Format</b>	Purified
<b>Clonality</b>	Monoclonal (mouse origin)
<b>Isotype</b>	Mouse IgG1, kappa
<b>Clone Name</b>	CTKN20-1
<b>Purity</b>	Protein G affinity chromatography
<b>UniProt</b>	P35900
<b>Localization</b>	Cytoplasmic
<b>Applications</b>	Western Blot : 1-2ug/ml Immunohistochemistry (FFPE) : 1-2ug/ml for 30 min at RT Prediluted IHC Only Format : incubate for 30 min at RT (1)
<b>Limitations</b>	This KRT20 antibody is available for research use only.



Western blot testing of human HT29 cell lysate with KRT20 antibody (clone CTKN20-1). Predicted molecular weight ~46 kDa.



IHC testing of human colon with KRT20 antibody (clone CTKN20-1). Required HIER: boil tissue sections in 10mM citrate buffer, pH 6, for 10-20 min followed by cooling at RT for 20 min.

## Description

The protein encoded by this gene is a member of the keratin family. The keratins are intermediate filament proteins responsible for the structural integrity of epithelial cells and are subdivided into cytokeratins and hair keratins. The type I cytokeratins consist of acidic proteins which are arranged in pairs of heterotypic keratin chains. KRT20 (Cytokeratin 20, CK20) is a major cellular protein of mature enterocytes and goblet cells and is specifically expressed in the gastric and intestinal mucosa. The type I cytokeratin genes are clustered in a region of chromosome 17q12-q21.

## Application Notes

The stated application concentrations are suggested starting points. Titration of the KRT20 antibody may be required due to differences in protocols and secondary/substrate sensitivity.

1. The prediluted format is supplied in a dropper bottle and is optimized for use in IHC. After epitope retrieval step (if required), drip mAb solution onto the tissue section and incubate at RT for 30 min.

## Immunogen

A portion of amino acids 196-323 from the human protein was used as the immunogen for this KRT20 antibody.

## Storage

Store the KRT20 antibody at 2-8°C (with azide) or aliquot and store at -20°C or colder (without azide).