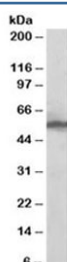


## KPNA2 Antibody (R35508)

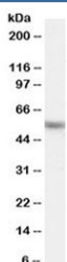
Catalog No.	Formulation	Size
R35508-100UG	0.5 mg/ml in 1X TBS, pH7.3, with 0.5% BSA (US sourced) and 0.02% sodium azide	100 ug

[Bulk quote request](#)

Availability	1-3 business days
Species Reactivity	Human
Predicted Reactivity	Mouse, Rat, Dog
Format	Antigen affinity purified
Clonality	Polyclonal (goat origin)
Isotype	Goat Ig
Purity	Antigen affinity
Gene ID	3838
Applications	Western Blot : 0.1-0.3ug/ml ELISA (peptide) LOD : 1:32000
Limitations	This KPNA2 antibody is available for research use only.



Western blot testing of HeLa lysate with KPNA2 antibody at 0.1ug/ml. Predicted molecular weight: ~58 kDa.



Western blot testing of HeLa lysate with KPNA2 antibody at 0.03ug/ml. Predicted molecular weight: ~58 kDa.

## Description

Additional name(s) for this target protein: Karyopherin alpha 2

## Application Notes

Optimal dilution of the KPNA2 antibody should be determined by the researcher.

## Immunogen

Amino acids QVQDGAPGTFNF were used as the immunogen for this KPNA2 antibody.

## Storage

Aliquot and store the KPNA2 antibody at -20oC.