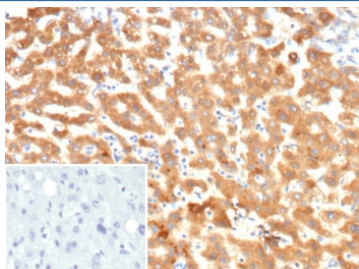


KNG1 Antibody / Kininogen 1 [clone KNG1/7422] (V5752)

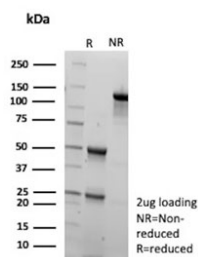
Catalog No.	Formulation	Size
V5752-100UG	0.2 mg/ml in 1X PBS with 0.1 mg/ml BSA (US sourced), 0.05% sodium azide	100 ug
V5752-20UG	0.2 mg/ml in 1X PBS with 0.1 mg/ml BSA (US sourced), 0.05% sodium azide	20 ug
V5752SAF-100UG	1 mg/ml in 1X PBS; BSA free, sodium azide free	100 ug

[Bulk quote request](#)

Availability	1-3 business days
Species Reactivity	Human
Format	Purified
Clonality	Monoclonal (mouse origin)
Isotype	Mouse IgG1, kappa
Clone Name	KNG1/7422
Purity	Protein G affinity
UniProt	P01042
Localization	Extracellular, Secreted
Applications	Immunohistochemistry (FFPE) : 1-2ug/ml
Limitations	This KNG1 antibody is available for research use only.



IHC staining of FFPE human liver tissue with KNG1 antibody (clone KNG1/7422). Inset: PBS used in place of primary Ab (secondary Ab negative control). HIER: boil tissue sections in pH 9 10mM Tris with 1mM EDTA for 20 min and allow to cool before testing.



SDS-PAGE analysis of purified, BSA-free KNG1 antibody (clone KNG1/7422) as confirmation of integrity and purity.

Description

Kininogens are inhibitors of thiol proteases. HMW-kininogen plays an important role in blood coagulation by helping to position optimally prekallikrein and factor XI next to factor XII; HMW-kininogen inhibits the thrombin- and plasmin-induced aggregation of thrombocytes. LMW-kininogen inhibits the aggregation of thrombocytes. LMW-kininogen is in contrast to HMW-kininogen not involved in blood clotting. [UniProt]

Application Notes

Optimal dilution of the KNG1 antibody should be determined by the researcher.

Immunogen

A portion of amino acids 1-200 from human Kininogen 1 protein was used as the immunogen for the KNG1 antibody.

Storage

Aliquot the KNG1 antibody and store frozen at -20oC or colder. Avoid repeated freeze-thaw cycles.