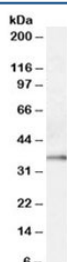


KLK5 Antibody (R34346)

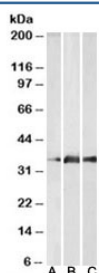
Catalog No.	Formulation	Size
R34346-100UG	0.5 mg/ml in 1X TBS, pH7.3, with 0.5% BSA (US sourced) and 0.02% sodium azide	100 ug

[Bulk quote request](#)

Availability	1-3 business days
Species Reactivity	Human
Predicted Reactivity	Cow, Dog, Rat
Format	Antigen affinity purified
Clonality	Polyclonal (goat origin)
Isotype	Goat Ig
Purity	Antigen affinity
Gene ID	25818
Applications	Western Blot : 0.1-0.3ug/ml ELISA (peptide) LOD : 1:4000
Limitations	This KLK5 antibody is available for research use only.



Western blot testing of human prostate lysate with KLK5 antibody at 0.1ug/ml. Predicted molecular weight: ~32kDa.



Western blot testing of A) human cerebellum, B) mouse brain and C) rat brain lysate with KLK5 antibody at 2ug/ml. Predicted molecular weight: ~32kDa.

Description

Additional name(s) for this target protein: Kallikrein-related peptidase 5

Application Notes

Optimal dilution of the KLK5 antibody should be determined by the researcher.

Immunogen

Amino acids KAGRDSCQGD were used as the immunogen for this KLK5 antibody.

Storage

Aliquot and store the KLK5 antibody at -20oC.