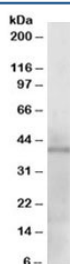


KLF3 Antibody (R34728)

Catalog No.	Formulation	Size
R34728-100UG	0.5 mg/ml in 1X TBS, pH7.3, with 0.5% BSA (US sourced) and 0.02% sodium azide	100 ug

[Bulk quote request](#)

Availability	1-3 business days
Species Reactivity	Human
Predicted Reactivity	Cow, Dog, Mouse, Pig, Rat
Format	Antigen affinity purified
Clonality	Polyclonal (goat origin)
Isotype	Goat Ig
Purity	Antigen affinity
Gene ID	51274
Applications	Western Blot : 1-3ug/ml ELISA (peptide) LOD : 1:32000
Limitations	This KLF3 antibody is available for research use only.



Western blot testing of human heart lysate with KLF3 antibody at 1ug/ml. Predicted molecular weight: ~40kDa.

Description

Additional name(s) for this target protein: Kruppel-like factor 3

Application Notes

Optimal dilution of the KLF3 antibody should be determined by the researcher.

Immunogen

Amino acids LMFDVPVKQEAMD were used as the immunogen for this KLF3 antibody.

Storage

Aliquot and store the KLF3 antibody at -20oC.