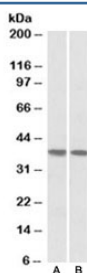


KLF2 Antibody (R33149)

Catalog No.	Formulation	Size
R33149-100UG	0.5 mg/ml in 1X TBS, pH7.3, with 0.5% BSA (US sourced) and 0.02% sodium azide	100 ug

[Bulk quote request](#)

Availability	1-3 business days
Species Reactivity	Human
Predicted Reactivity	Cow, Dog, Mouse, Pig, Rat
Format	Antigen affinity purified
Clonality	Polyclonal (goat origin)
Isotype	Goat Ig
Purity	Antigen affinity
Gene ID	10365
Applications	Western Blot : 1-3ug/ml ELISA (peptide) LOD : 1:16000
Limitations	This KLF2 antibody is available for research use only.



Western blot testing of human heart [A] and lung [B] lysates with KLF2 antibody at 1ug/ml. Predicted molecular weight ~37kDa.

Description

Additional name(s) for this target protein: Kruppel-like factor 2

Application Notes

Optimal dilution of the KLF2 antibody should be determined by the researcher.

Immunogen

Amino acids ALSEPILPSFST were used as the immunogen for this KLF2 antibody.

Storage

Aliquot and store the KLF2 antibody at -20oC.