

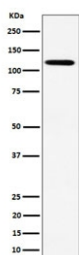
Kinesin 1 heavy chain Antibody / KIF5B [clone 29K30] (RQ8753)

Catalog No.	Formulation	Size
RQ8753	Antibody in PBS with 0.02% sodium azide, 50% glycerol and 0.4-0.5mg/ml BSA	100 ul

Recombinant RABBIT MONOCLONAL

[Bulk quote request](#)

Availability	1-3 days
Species Reactivity	Human, Mouse, Rat
Format	Purified
Clonality	Recombinant Rabbit Monoclonal
Isotype	Rabbit IgG
Clone Name	29K30
Purity	Affinity chromatography
UniProt	P33176
Applications	Western Blot : 1:500-1:2000
Limitations	This Kinesin 1 heavy chain antibody is available for research use only.



Western blot testing of human HeLa cell lysate with Kinesin 1 heavy chain antibody.
Predicted molecular weight ~110 kDa.

Description

Regulates centrosome and nuclear positioning during mitotic entry. During the G2 phase of the cell cycle in a BICD2-dependent manner, antagonizes dynein function and drives the separation of nuclei and centrosomes. [UniProt]

Application Notes

Optimal dilution of the Kinesin 1 heavy chain antibody should be determined by the researcher.

Immunogen

A synthetic peptide specific to human Kinesin 1 heavy chain protein was used as the immunogen for the Kinesin 1 heavy

chain antibody.

Storage

Store the Kinesin 1 heavy chain antibody at -20oC.