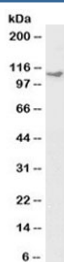


## KIF5B Antibody (Biotin Conjugate) (R35405BTN)

Catalog No.	Formulation	Size
R35405BTN	0.5 mg/ml in 1X TBS, pH7.3, with 0.5% BSA (US sourced) and 0.02% sodium azide	100 ug

[Bulk quote request](#)

Availability	1-3 business days
Species Reactivity	Human, Dog
Predicted Reactivity	Cow, Mouse, Rat
Format	Biotin Conjugate
Clonality	Polyclonal (goat origin)
Isotype	Goat Ig
Purity	Antigen affinity
Gene ID	3799
Applications	Western Blot : 1-3ug/ml ELISA (peptide) LOD : 1:8000
Limitations	This KIF5B antibody is available for research use only.



Western blot of HeLa lysate with biotinylated KIF5B antibody at 1ug/ml. Predicted molecular weight: ~110 kDa.

### Description

Additional name(s) for this target protein: Kinesin family member 5B, Kinesin 1, UKHC

### Application Notes

Optimal dilution of the KIF5B antibody should be determined by the researcher.

### Immunogen

Amino acids QPVAVRGGGGKQV were used as the immunogen for this KIF5B antibody.

## Storage

Aliquot and store the KIF5B antibody at -20oC.