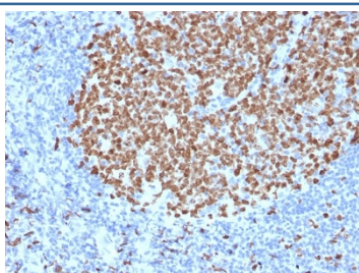


## Ki67 Antibody [clone MKI67/2463] (V7435)

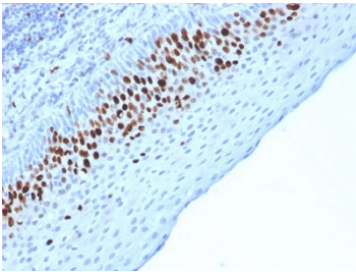
| Catalog No.    | Formulation   | Size   |
|----------------|---|--------|
| V7435-100UG    | 0.2 mg/ml in 1X PBS with 0.1 mg/ml BSA (US sourced) and 0.05% sodium azide                      | 100 ug |
| V7435-20UG     | 0.2 mg/ml in 1X PBS with 0.1 mg/ml BSA (US sourced) and 0.05% sodium azide                      | 20 ug  |
| V7435SAF-100UG | 1 mg/ml in 1X PBS; BSA free, sodium azide free  | 100 ug |
| V7435IHC-7ML   | Prediluted in 1X PBS with 0.1 mg/ml BSA (US sourced) and 0.05% sodium azide; *For IHC use only* | 7 ml   |

[Bulk quote request](#)

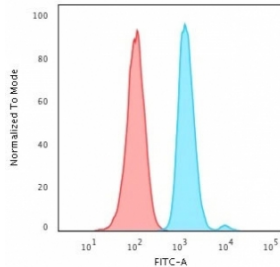
|                           |  |
|---------------------------|--|
| <b>Availability</b>       | 1-3 business days  |
| <b>Species Reactivity</b> | Human  |
| <b>Format</b>             | Purified   |
| <b>Clonality</b>          | Monoclonal (mouse origin)  |
| <b>Isotype</b>            | Mouse IgG1, kappa  |
| <b>Clone Name</b>         | MKI67/2463   |
| <b>Purity</b>             | Protein G affinity chromatography  |
| <b>UniProt</b>            | P46013   |
| <b>Localization</b>       | Nuclear  |
| <b>Applications</b>       | Western Blot : 1-2ug/ml<br>Flow Cytometry : 1-2ug/10 <sup>6</sup> cells<br>Immunohistochemistry (FFPE) : 1-2ug/ml for 30 min at RT |
| <b>Limitations</b>        | This Ki67 antibody is available for research use only.   |



IHC testing of FFPE human tonsil stained with Ki67 antibody (MKI67/2463). Required HIER: boiling tissue sections in 10mM citrate buffer, pH6, for 10-20 min followed by cooling at RT for 20 min.

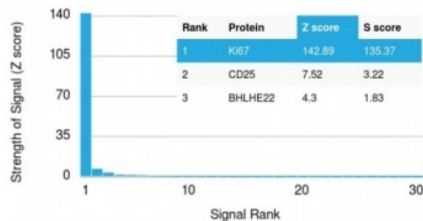


IHC testing of FFPE human skin stained with Ki67 antibody (MKI67/2463). Required HIER: boiling tissue sections in 10mM citrate buffer, pH6, for 10-20 min followed by cooling at RT for 20 min.

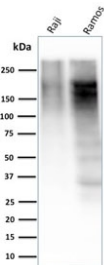


FACS testing of human HeLa cells with Ki67 antibody (blue, clone MKI67/2463) and isotype control (red). Cells were trypsinized and 2-4% PFA-fixed prior to staining.

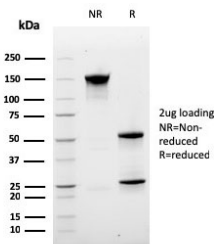
Human Protein Microarray Specificity Validation



Analysis of HuProt(TM) microarray containing more than 19,000 full-length human proteins using Ki67 antibody (clone MKI67/2463). These results demonstrate the foremost specificity of the MKI67/2463 mAb. **Z- and S- score:** The Z-score represents the strength of a signal that an antibody (in combination with a fluorescently-tagged anti-IgG secondary Ab) produces when binding to a particular protein on the HuProt(TM) array. Z-scores are described in units of standard deviations (SD's) above the mean value of all signals generated on that array. If the targets on the HuProt(TM) are arranged in descending order of the Z-score, the S-score is the difference (also in units of SD's) between the Z-scores. The S-score therefore represents the relative target specificity of an Ab to its intended target.



Western blot testing of human Raji and Ramos cell lysate with Ki67 antibody (clone MKI67/2463). Expected molecular weight ~350 kDa.



SDS-PAGE analysis of purified, BSA-free Ki67 antibody (clone MKI67/2463) as confirmation of integrity and purity.

## Description

Ki67 antigen is a nuclear, non-histone protein that is present in all stages of the cell cycle except G0. This characteristic makes Ki67 an excellent marker for proliferating cells and is commonly used as one of the prognostic factors in cancer studies. A correlation has been demonstrated between Ki67 index and the histo-pathological grade of neoplasms. Assessment of Ki67 expression in renal and ureter tumors shows a correlation between tumor proliferation and disease progression, thus making it possible to differentiate high-risk patients. Ki-67 expression may also prove to be important for distinguishing between malignant and benign peripheral nerve sheath tumors. Ki67 labeling index has been shown to be

a prognostic marker in a number of neoplasms including grade II astrocytoma, oligodendroglioma, colon carcinoma, and breast carcinoma. In general, Ki67 is a good marker of proliferating cell populations.

## Application Notes

Optimal dilution of the Ki67 antibody should be determined by the researcher.

1. The prediluted format is supplied in a dropper bottle and is optimized for use in IHC. After epitope retrieval step (if required), drip mAb solution onto the tissue section and incubate at RT for 30 min.

## Immunogen

A portion of amino acids 2293-2478 was used as the immunogen for the Ki67 antibody.

## Storage

Store the Ki67 antibody at 2-8oC (with azide) or aliquot and store at -20oC or colder (without azide).