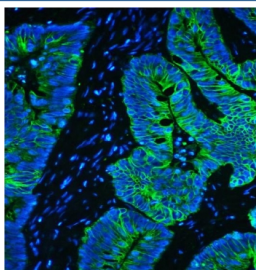


Keratin 8 Antibody / Cytokeratin 8 [clone 3G9] (RQ4889)

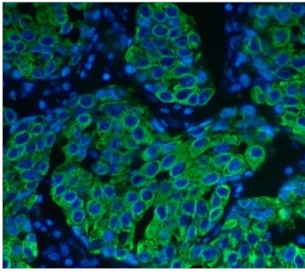
Catalog No.	Formulation	Size
RQ4889	0.5mg/ml if reconstituted with 0.2ml sterile DI water	100 ug

Bulk quote request

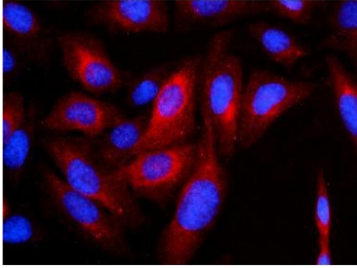
Availability	1-3 business days
Species Reactivity	Human
Format	Purified
Clonality	Monoclonal (mouse origin)
Isotype	Mouse IgG2b
Clone Name	3G9
Purity	Purified
Buffer	Lyophilized from 1X PBS with 2% Trehalose and 0.025% sodium azide
UniProt	P05787
Applications	Western Blot : 0.5-1ug/ml Immunohistochemistry (FFPE) : 1-2ug/ml Immunofluorescence (FFPE) : 2-4ug/ml Flow Cytometry : 1-3ug/million cells
Limitations	This Keratin 8 antibody is available for research use only.



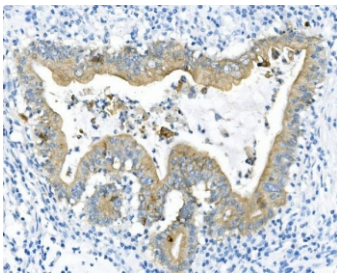
Immunofluorescent staining of FFPE human intestinal cancer with Keratin 8 antibody (green) and DAPI nuclear stain (blue). HIER: steam section in pH8 EDTA for 20 min.



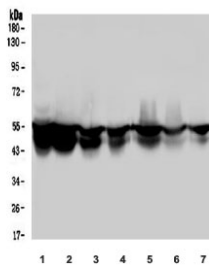
Immunofluorescent staining of FFPE human breast cancer with Keratin 8 antibody (green) and DAPI nuclear stain (blue). HIER: steam section in pH8 EDTA for 20 min.



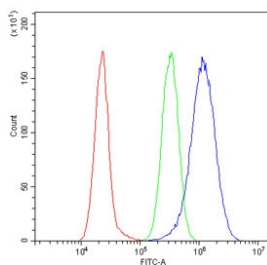
Immunofluorescent staining of FFPE U-2 OS cells with Keratin 8 antibody (red) and DAPI nuclear stain (blue). HIER: steam section in pH6 citrate buffer for 20 min.



IHC staining of FFPE human rectal cancer with Keratin 8 antibody. HIER: boil tissue sections in pH8 EDTA for 20 min and allow to cool before testing.



Western blot testing of 1) placenta, 2) Caco-2, 3) A549, 4) A431, 5) HeLa, 6) K562 and 7) HEK293 lysate with Keratin 8 antibody. Predicted molecular weight ~56 kDa.



Flow cytometry testing of human A549 cells with Keratin 8 antibody at 1ug/million cells (blocked with goat sera); Red=cells alone, Green=isotype control, Blue= Keratin 8 antibody.

Description

Keratin, type II cytoskeletal 8, also known as cytokeratin-8 (CK-8) or keratin-8 (K8) is a keratin protein that is encoded in humans by the KRT8 gene. This gene is a member of the type II keratin family clustered on the long arm of chromosome 12. Type I and type II keratins heteropolymerize to form intermediate-sized filaments in the cytoplasm of epithelial cells. The product of this gene typically dimerizes with keratin 18 to form an intermediate filament in simple single-layered epithelial cells. This protein plays a role in maintaining cellular structural integrity and also functions in signal transduction and cellular differentiation. Mutations in this gene cause cryptogenic cirrhosis. Alternatively spliced transcript variants have been found for this gene.

Application Notes

Optimal dilution of the Keratin 8 antibody should be determined by the researcher.

Immunogen

Amino acids D107-K325 from the human protein were used as the immunogen for the Keratin 8 antibody.

Storage

After reconstitution, the Keratin 8 antibody can be stored for up to one month at 4oC. For long-term, aliquot and store at -20oC. Avoid repeated freezing and thawing.