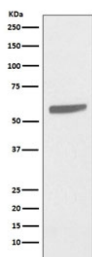


Keratin 5 Antibody / KRT5 [clone FBE-11] (RQ5411)

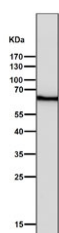
Catalog No.	Formulation	Size
RQ5411	Antibody in PBS with 0.02% sodium azide, 50% glycerol and 0.4-0.5mg/ml BSA	100 ul

[Bulk quote request](#)

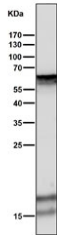
Availability	1-2 weeks
Species Reactivity	Human
Format	Purified
Clonality	Rabbit Monoclonal
Isotype	Rabbit IgG
Clone Name	FBE-11
Purity	Affinity purified
UniProt	P13647
Applications	Western Blot : 1:1000-1:5000 Immunohistochemistry (FFPE) : 1:50-1:200
Limitations	This Keratin 5 antibody is available for research use only.



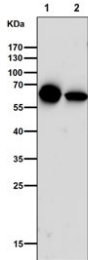
Western blot testing of human A431 cell lysate with Keratin 5 antibody. Predicted molecular weight: 58-62 kDa.



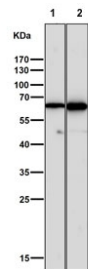
Western blot testing of human HaCaT cell lysate with Keratin 5 antibody. Predicted molecular weight: 58-62 kDa.



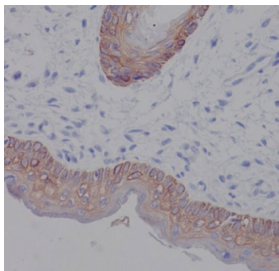
Western blot testing of human ThP-1 cell lysate with Keratin 5 antibody. Predicted molecular weight: 58-62 kDa.



Western blot testing of mouse 1) heart and 2) liver tissue lysate with Keratin 5 antibody. Predicted molecular weight: 58-62 kDa.



Western blot testing of 1) mouse kidney and 2) rat heart tissue lysate with Keratin 5 antibody. Predicted molecular weight: 58-62 kDa.



IHC staining of FFPE human skin tissue with Keratin 5 antibody. HIER: boil tissue sections in pH8 EDTA for 20 min and allow to cool before testing.

Description

The protein encoded by the KRT5 gene is a member of the keratin gene family. The type II cytokeratins consist of basic or neutral proteins which are arranged in pairs of heterotypic keratin chains coexpressed during differentiation of simple and stratified epithelial tissues. This type II cytokeratin is specifically expressed in the basal layer of the epidermis with family member KRT14. Mutations in these genes have been associated with a complex of diseases termed epidermolysis bullosa simplex. The type II cytokeratins are clustered in a region of chromosome 12q12-q13. [RefSeq]

Application Notes

Optimal dilution of the Keratin 5 antibody should be determined by the researcher.

Immunogen

A synthetic peptide specific to human Cytokeratin 5 / KRT5 was used as the immunogen for the Keratin 5 antibody.

Storage

Store the Keratin 5 antibody at -20oC.

