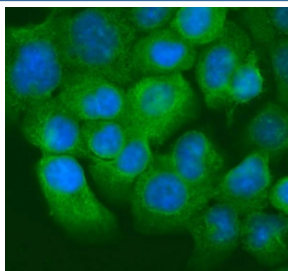


Keratin 20 Antibody / Cytokeratin 20 (RQ5632)

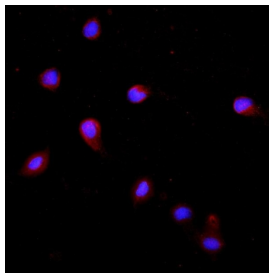
Catalog No.	Formulation	Size
RQ5632	0.5mg/ml if reconstituted with 0.2ml sterile DI water	100 ug

Bulk quote request

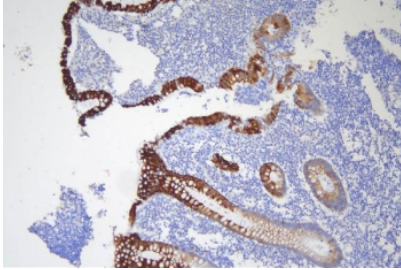
Availability	1-3 business days
Species Reactivity	Human, Mouse, Rat
Format	Antigen affinity purified
Clonality	Polyclonal
Isotype	Rabbit IgG
Purity	Affinity purified
Buffer	Lyophilized from 1X PBS with 2% Trehalose and 0.025% sodium azide
UniProt	Q9D312
Localization	Cytoplasmic
Applications	Western Blot : 0.5-1ug/ml Immunohistochemistry : 1-2ug/ml Immunofluorescence : 2-4ug/ml Flow Cytometry : 1-3ug/million cells Direct ELISA : 0.1-0.5ug/ml
Limitations	This Keratin 20 antibody is available for research use only.



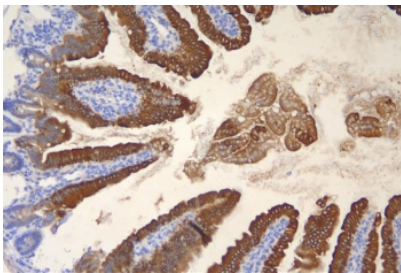
Immunofluorescent staining of FFPE human A431 cells with Keratin 20 antibody (green) and DAPI nuclear stain (blue). HIER: steam section in pH6 citrate buffer for 20 min.



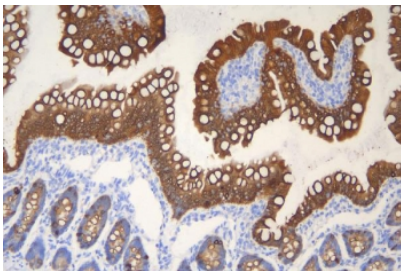
Immunofluorescent staining of FFPE rat RH35 cells with Keratin 20 antibody (red) and DAPI nuclear stain (blue). HIER: steam section in pH6 citrate buffer for 20 min.



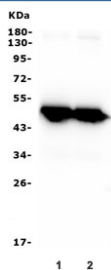
IHC staining of FFPE human appendix with Keratin 20 antibody. HIER: boil tissue sections in pH8 EDTA for 20 min and allow to cool before testing.



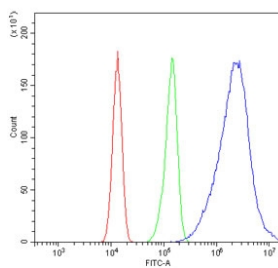
IHC staining of FFPE mouse intestine with Keratin 20 antibody. HIER: boil tissue sections in pH8 EDTA for 20 min and allow to cool before testing.



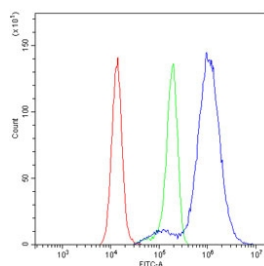
IHC staining of FFPE rat intestine with Keratin 20 antibody. HIER: boil tissue sections in pH8 EDTA for 20 min and allow to cool before testing.



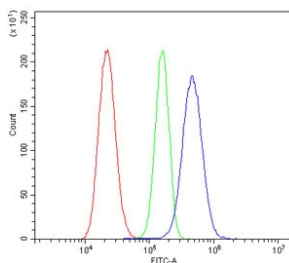
Western blot testing of 1) human Caco-2 and 2) mouse small intestine lysate with Keratin 20 antibody. Predicted molecular weight ~48 kDa.



Flow cytometry testing of human Caco-2 cells with Keratin 20 antibody at 1ug/million cells (blocked with goat sera); Red=cells alone, Green=isotype control, Blue= Keratin 20 antibody.



Flow cytometry testing of human HeLa cells with Keratin 20 antibody at 1ug/million cells (blocked with goat sera); Red=cells alone, Green=isotype control, Blue= Keratin 20 antibody.



Flow cytometry testing of rat RH35 cells with Keratin 20 antibody at 1ug/million cells (blocked with goat sera); Red=cells alone, Green=isotype control, Blue= Keratin 20 antibody.

Description

Keratin 20, often abbreviated CK20, is a protein that in humans is encoded by the KRT20 gene. This gene encodes a member of the keratin protein family and is found within a cluster of cytokeratin genes on chromosome 11. Keratins are cytoskeletal proteins that are preferentially expressed in epithelial cells. The encoded protein may help maintain intermediate filament organization in intestinal epithelium. Phosphorylation of this protein may also influence mucin secretion in the small intestine.

Application Notes

Optimal dilution of the Keratin 20 antibody should be determined by the researcher.

Immunogen

Recombinant mouse protein (amino acids R29-V431) was used as the immunogen for the Keratin 20 antibody.

Storage

After reconstitution, the Keratin 20 antibody can be stored for up to one month at 4°C. For long-term, aliquot and store at -20°C. Avoid repeated freezing and thawing.