

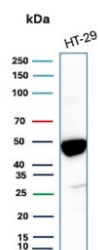
Keratin 20 Antibody / Cytokeratin 20 / CK20 [clone KRT20/3224R] (V5776)

Catalog No.	Formulation	Size
V5776-100UG	0.2 mg/ml in 1X PBS with 0.1 mg/ml BSA (US sourced), 0.05% sodium azide	100 ug
V5776-20UG	0.2 mg/ml in 1X PBS with 0.1 mg/ml BSA (US sourced), 0.05% sodium azide	20 ug
V5776SAF-100UG	1 mg/ml in 1X PBS; BSA free, sodium azide free	100 ug

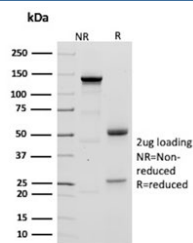
Recombinant **RABBIT MONOCLONAL**

[Bulk quote request](#)

Availability	1-3 business days
Species Reactivity	Human
Format	Purified
Clonality	Recombinant Rabbit Monoclonal
Isotype	Rabbit IgG, kappa
Clone Name	KRT20/3224R
Purity	Protein A affinity
UniProt	P35900
Localization	Cytoplasm
Applications	Western Blot : 2-4ug/ml
Limitations	This Cytokeratin 20 antibody is available for research use only.



Western blot testing of human HT29 cell lysate with Keratin 20 antibody (clone KRT20/3224R). Predicted molecular weight ~46 kDa.



SDS-PAGE analysis of purified, BSA-free Keratin 20 antibody (clone KRT20/3224R) as confirmation of integrity and purity.

Description

This MAb recognizes an intermediate filament protein of 46kDa, identified as cytokeratin 20 (KRT20). KRT20 is abundantly expressed in goblet cells and enterocytes of the gastrointestinal tract. It is a useful marker of pancreatic and colorectal cancer. KRT20 is expressed under normal, hyperplastic and neoplastic conditions. It has been detected in adenocarcinomas of the colon, stomach and biliary tract. Breast carcinomas are generally non-reactive.

Application Notes

Optimal dilution of the Cytokeratin 20 antibody should be determined by the researcher.

Immunogen

A recombinant partial protein from human KRT20 protein (within amino acids 196-323) was used as the immunogen for the Cytokeratin 20 antibody.

Storage

Aliquot the Cytokeratin 20 antibody and store frozen at -20°C or colder. Avoid repeated freeze-thaw cycles.