

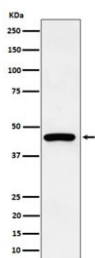
Keratin 19 Antibody / KRT19 [clone 28K37] (RQ8356)

Catalog No.	Formulation	Size
RQ8356	Antibody in PBS with 0.02% sodium azide, 50% glycerol and 0.4-0.5mg/ml BSA	100 ul

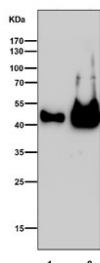
Recombinant **RABBIT MONOCLONAL**

[Bulk quote request](#)

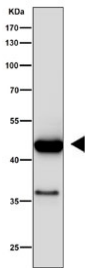
Availability	1-3 business days
Species Reactivity	Human, Rat
Format	Purified
Clonality	Recombinant Rabbit Monoclonal
Isotype	Rabbit IgG
Clone Name	28K37
Purity	Affinity chromatography
UniProt	P08727
Localization	Cytoplasm, cell membrane
Applications	Western Blot : 1:500-1:2000 Immunohistochemistry (FFPE) : 1:50-1:200
Limitations	This Keratin 19 antibody is available for research use only.



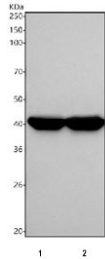
Western blot testing of human HepG2 cell lysate with Keratin 19 antibody. Predicted molecular weight ~43 kDa.



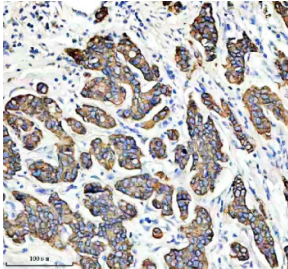
Western blot testing of human 1) HepG2 and 2) MCF7 cell lysate with Keratin 19 antibody. Predicted molecular weight ~43 kDa.



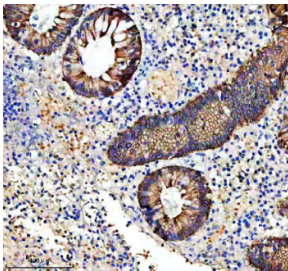
Western blot testing of human SK-BR-3 cell lysate with Keratin 19 antibody. Predicted molecular weight ~43 kDa.



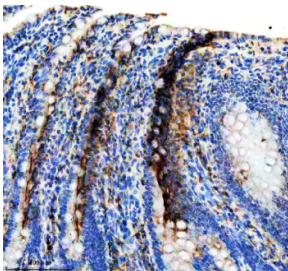
Western blot testing of human 1) MCF7 and 2) RT4 cell lysate with Keratin 19 antibody. Predicted molecular weight ~43 kDa.



IHC staining of FFPE human breast cancer tissue with Keratin 19 antibody. HIER: boil tissue sections in pH8 EDTA for 20 min and allow to cool before testing.



IHC staining of FFPE human appendix tissue with Keratin 19 antibody. HIER: boil tissue sections in pH8 EDTA for 20 min and allow to cool before testing.



IHC staining of FFPE rat small intestine tissue with Keratin 19 antibody. HIER: boil tissue sections in pH8 EDTA for 20 min and allow to cool before testing.

Description

Involved in the organization of myofibers. Together with KRT8, helps to link the contractile apparatus to dystrophin at the costameres of striated muscle. [UniProt]

Application Notes

Optimal dilution of the Keratin 19 antibody should be determined by the researcher.

Immunogen

A synthetic peptide derived from human Cytokeratin 19 was used as the immunogen for the Keratin 19 antibody.

Storage

Store the Keratin 19 antibody at -20oC.