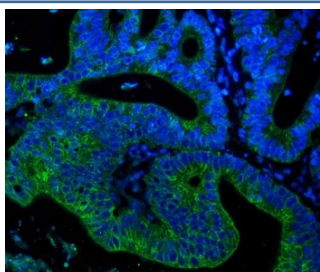


Keratin 18 Antibody [clone 7I6] (RQ6082)

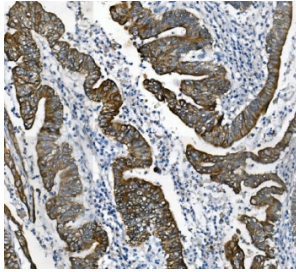
Catalog No.	Formulation	Size
RQ6082	0.5mg/ml if reconstituted with 0.2ml sterile DI water	100 ug

Bulk quote request

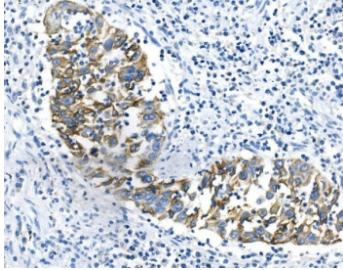
Availability	1-3 business days
Species Reactivity	Human
Format	Purified
Clonality	Monoclonal (mouse origin)
Isotype	Mouse IgG1
Clone Name	7I6
Purity	Affinity purified
Buffer	Lyophilized from 1X PBS with 2% Trehalose and 0.025% sodium azide
UniProt	P05783
Applications	Western Blot : 0.5-1ug/ml Immunohistochemistry : 1-2ug/ml Flow Cytometry : 1-3ug/million cells Immunofluorescence : 2-4ug/ml
Limitations	This Keratin 18 antibody is available for research use only.



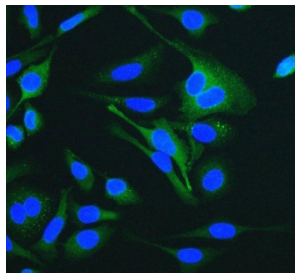
Immunofluorescent staining of FFPE human placental tissue with Keratin 18 antibody (green) and DAPI nuclear stain (blue). HIER: steam section in pH8 EDTA for 20 min.



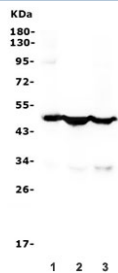
IHC staining of FFPE human rectal cancer with Keratin 18 antibody. HIER: boil tissue sections in pH8 EDTA for 20 min and allow to cool before testing.



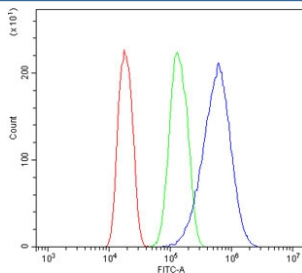
IHC staining of FFPE human lung cancer with Keratin 18 antibody. HIER: boil tissue sections in pH8 EDTA for 20 min and allow to cool before testing.



Immunofluorescent staining of FFPE human HeLa cells with Keratin 18 antibody (green) and DAPI nuclear stain (blue). HIER: steam section in pH6 citrate buffer for 20 min.



Western blot testing of human 1) placenta, 2) Caco-2 and 3) A549 lysate with Keratin 18 antibody. Predicted molecular weight ~48 kDa.



Flow cytometry testing of human A431 cells with Keratin 18 antibody at 1ug/million cells (blocked with goat sera); Red=cells alone, Green=isotype control, Blue= Keratin 18 antibody.

Description

Keratin 18, mapped to 12q13.13, is a type I cytokeratin. It is, together with its filament partner keratin 8, perhaps the most commonly found products of the intermediate filament gene family. They are expressed in single layer epithelial tissues of the body. Mutations in this gene have been linked to cryptogenic cirrhosis. Two transcript variants encoding the same protein have been found for this gene.

Application Notes

Optimal dilution of the Keratin 18 antibody should be determined by the researcher.

Immunogen

Recombinant human protein (amino acids E204-H430) was used as the immunogen for the Keratin 18 antibody.

Storage

After reconstitution, the Keratin 18 antibody can be stored for up to one month at 4°C. For long-term, aliquot and store at -20°C. Avoid repeated freezing and thawing.