

## Keratin 15 Antibody [clone LHK15] (V3286)

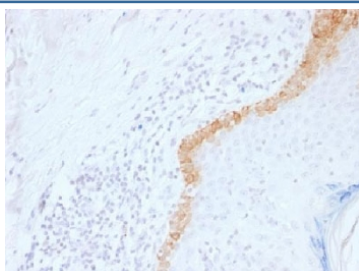
Catalog No.	Formulation	Size
V3286-100UG	0.2 mg/ml in 1X PBS with 0.1 mg/ml BSA (US sourced) and 0.05% sodium azide	100 ug
V3286-20UG	0.2 mg/ml in 1X PBS with 0.1 mg/ml BSA (US sourced) and 0.05% sodium azide	20 ug
V3286SAF-100UG	1 mg/ml in 1X PBS; BSA free, sodium azide free	100 ug



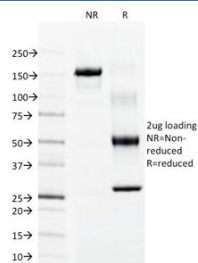
Citations (21)

[Bulk quote request](#)

<b>Availability</b>	1-3 business days
<b>Species Reactivity</b>	Human, Rat
<b>Format</b>	Purified
<b>Clonality</b>	Monoclonal (mouse origin)
<b>Isotype</b>	Mouse IgG2a, kappa
<b>Clone Name</b>	LHK15
<b>Purity</b>	Protein G affinity chromatography
<b>UniProt</b>	P19012
<b>Localization</b>	Cytoplasmic
<b>Applications</b>	Immunohistochemistry (FFPE) : 0.1-0.2ug/ml for 30 min at RT
<b>Limitations</b>	This Keratin 15 antibody is available for research use only.



IHC testing of FFPE human skin with Keratin 15 antibody (clone LHK15). Required HIER: boil tissue sections in 10mM citrate buffer, pH 6, for 10-20 min.



SDS-PAGE Analysis of Purified, BSA-Free Keratin 15 Antibody (clone LHK15).  
Confirmation of Integrity and Purity of the Antibody.

## Description

Keratins are a family of intermediate filament proteins that assemble into filaments through forming heterodimers of one type I keratin (keratins 9 to 23) and one type II keratin (keratins 1 to 8). Keratins demonstrate tissue and differentiation specific expression profiles. Keratin 15 is a type I keratin which is expressed only in basal keratinocytes in stratified epithelia and does not appear to have a natural type II expression partner. Keratin 15 is down regulated in activated keratinocytes. Cytokeratin 15 is a specific marker of stem cells of the hair-follicle bulge and may be a useful marker for diagnosis between basal cell carcinoma (BCC) and trichoepithelioma. Trichoblastoma are benign neoplasms of follicular differentiation frequently found in nevus sebaceous. Many morphologic features are shared with nodular basal cell carcinoma, sometimes rendering a diagnosis difficult. Trichoblastoma and BCC show variable expression of Cytokeratin 15 and Cytokeratin 19, and absence of hair keratins.

## Application Notes

Optimal dilution of the Keratin 15 antibody should be determined by the researcher.

## Immunogen

A 17 amino acid sequence from the C- terminal of human CK15 was used as the immunogen for the Keratin 15 antibody.

## Storage

Store the Keratin 15 antibody at 2-8°C (with azide) or aliquot and store at -20°C or colder (without azide).