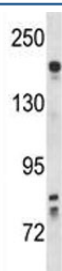


## Kdr Antibody / Kinase insert domain receptor / Vegfr2 (F44325)

Catalog No.	Formulation	Size
F44325-0.4ML	In 1X PBS, pH 7.4, with 0.09% sodium azide	0.4 ml
F44325-0.08ML	In 1X PBS, pH 7.4, with 0.09% sodium azide	0.08 ml

**Bulk quote request**

<b>Availability</b>	1-3 business days
<b>Species Reactivity</b>	Mouse
<b>Format</b>	Antigen affinity purified
<b>Clonality</b>	Polyclonal (rabbit origin)
<b>Isotype</b>	Rabbit Ig
<b>Purity</b>	Antigen affinity
<b>UniProt</b>	P35918
<b>Localization</b>	Cytoplasmic and cell surface
<b>Applications</b>	Western Blot : 1:1000
<b>Limitations</b>	This Kdr antibody is available for research use only.



Kdr antibody western blot analysis in mouse lung tissue lysate. Predicted molecular weight: ~152 (immature), 180-200 kDa (intermediate) and 220-230 kDa (mature).

### Description

Receptor for VEGF or VEGFC. Has a tyrosine-protein kinase activity. The VEGF-kinase ligand/receptor signaling system plays a key role in vascular development and regulation of vascular permeability.

### Application Notes

Titration of the Kdr antibody may be required due to differences in protocols and secondary/substrate sensitivity.

### Immunogen

A portion of amino acids 920-949 from the mouse protein was used as the immunogen for this Kdr antibody.

## **Storage**

Aliquot the Kdr antibody and store frozen at -20oC or colder. Avoid repeated freeze-thaw cycles.