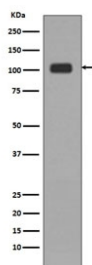


KDM1 / LSD1 Antibody [clone DID-11] (RQ4754)

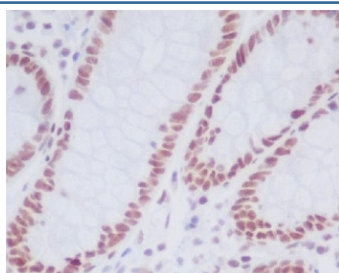
| Catalog No. | Formulation | Size |
|-------------|--|--------|
| RQ4754 | Antibody in PBS with 0.02% sodium azide, 50% glycerol and 0.4-0.5mg/ml BSA | 100 ul |

[Bulk quote request](#)

| | |
|--------------------|--|
| Availability | 1-2 weeks |
| Species Reactivity | Human |
| Format | Purified |
| Clonality | Rabbit Monoclonal |
| Isotype | Rabbit IgG |
| Clone Name | DID-11 |
| Purity | Affinity purified |
| UniProt | O60341 |
| Localization | Nuclear |
| Applications | Western Blot : 1:1000-1:2000 Immunohistochemistry (FFPE) : 1:50-1:200 |
| Limitations | This KDM1 / LSD1 antibody is available for research use only. |



Western blot testing of human HeLa lysate with KDM1 / LSD1 antibody. Predicted molecular weight ~110 kDa.



IHC staining of FFPE human colon tissue with KDM1 / LSD1 antibody. HIER: boil tissue sections in pH6, 10mM citrate buffer, for 10-20 min and allow to cool before testing.

Description

Histone demethylase that demethylates both 'Lys-4' (H3K4me) and 'Lys-9' (H3K9me) of histone H3, thereby acting as a coactivator or a corepressor, depending on the context. [UniProt]

Application Notes

Optimal dilution of the KDM1 / LSD1 antibody should be determined by the researcher.

Immunogen

A synthetic peptide specific to human Lysine-specific histone demethylase 1A was used as the immunogen for the KDM1 / LSD1 antibody.

Storage

Store the KDM1 / LSD1 antibody at -20oC.