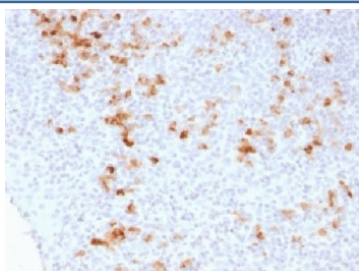


Kappa Light Chain Antibody [clone KLC1278] (V3302)

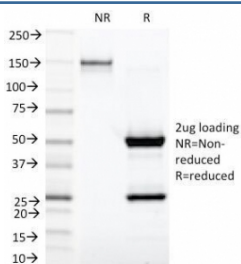
| Catalog No. | Formulation | Size |
|----------------|--|--------|
| V3302-100UG | 0.2 mg/ml in 1X PBS with 0.1 mg/ml BSA (US sourced) and 0.05% sodium azide | 100 ug |
| V3302-20UG | 0.2 mg/ml in 1X PBS with 0.1 mg/ml BSA (US sourced) and 0.05% sodium azide | 20 ug |
| V3302SAF-100UG | 1 mg/ml in 1X PBS; BSA free, sodium azide free | 100 ug |

Bulk quote request

| | |
|---------------------------|---|
| Availability | 1-3 business days |
| Species Reactivity | Human |
| Format | Purified |
| Clonality | Monoclonal (mouse origin) |
| Isotype | Mouse IgG1, kappa |
| Clone Name | KLC1278 |
| Purity | Protein G affinity chromatography |
| UniProt | P01601, P01834 |
| Localization | Cell Surface, cytoplasmic and secreted |
| Applications | Immunohistochemistry (FFPE) : 1-2ug/ml for 30 min at RT |
| Limitations | This Kappa Light Chain antibody is available for research use only. |



IHC testing of FFPE human tonsil stained with Kappa Light Chain antibody (clone KLC1278). Required HIER: boil tissue sections in 10mM Tris with 1mM EDTA, pH 9, for 10-20 min.



SDS-PAGE Analysis of Purified, BSA-Free Kappa Light Chain Antibody (clone KLC1278). Confirmation of Integrity and Purity of the Antibody.

Description

This mAb is specific to kappa light chain of immunoglobulin and shows no cross-reaction with lambda light chain or any of the five heavy chains. In mammals, the two light chains in an antibody are always identical, with only one type of light chain, kappa or lambda. The ratio of Kappa to Lambda is 70:30. However, with the occurrence of multiple myeloma or other B-cell malignancies this ratio is disturbed. Antibody to the kappa light chain is reportedly useful in the identification of leukemias, plasmacytomas, and certain non-Hodgkin's lymphomas. Demonstration of clonality in lymphoid infiltrates indicates that the infiltrate is malignant.

Application Notes

The optimal dilution of the Kappa Light Chain antibody for each application should be determined by the researcher.

Immunogen

Recombinant human Ig kappa chain was used as the immunogen for this Kappa Light Chain antibody.

Storage

Store the Kappa Light Chain antibody at 2-8°C (with azide) or aliquot and store at -20°C or colder (without azide).