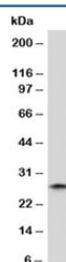


## Kappa Antibody [clone KC3L-1] (V7052)

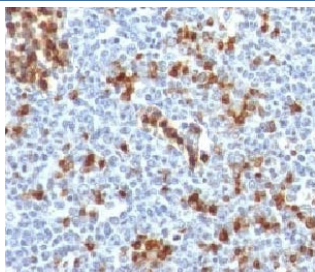
Catalog No.	Formulation	Size
V7052-100UG	0.2 mg/ml in 1X PBS with 0.1 mg/ml BSA (US sourced) and 0.05% sodium azide	100 ug
V7052-20UG	0.2 mg/ml in 1X PBS with 0.1 mg/ml BSA (US sourced) and 0.05% sodium azide	20 ug
V7052SAF-100UG	1 mg/ml in 1X PBS; BSA free, sodium azide free	100 ug
V7052IHC-7ML	Prediluted in 1X PBS with 0.1 mg/ml BSA (US sourced) and 0.05% sodium azide; *For IHC use only*	7 ml

[Bulk quote request](#)

<b>Species Reactivity</b>	Human
<b>Format</b>	Purified
<b>Clonality</b>	Monoclonal (mouse origin)
<b>Isotype</b>	Mouse IgG1, kappa
<b>Clone Name</b>	KC3L-1
<b>Purity</b>	Protein G affinity chromatography
<b>Buffer</b>	1X PBS, pH 7.4
<b>Gene ID</b>	3514
<b>Localization</b>	Cell surface, cytoplasmic and secreted
<b>Applications</b>	Western Blot : 1-2ug/ml Immunohistochemistry (FFPE) : 1-2ug/ml for 30 min at RT Prediluted IHC Only Format : incubate for 30 min at RT (1)
<b>Limitations</b>	This Kappa antibody is available for research use only.



Western blot analysis of human spleen lysate and Kappa antibody (clone KC3L-1).  
Expected molecular weight: 23-25 kDa.



IHC testing of FFPE human tonsil and Kappa antibody (clone KC3L-1). Required HIER: boil tissue sections in 10mM citrate buffer, pH 6.0, for 10-20 min followed by cooling at RT for 20 min.

## Description

This antibody is specific to the kappa light chain of immunoglobulin and shows no cross-reaction with lambda light chain or any of the five heavy chains. In mammals, the two light chains in an antibody are always identical, with only one type of light chain, kappa or lambda. In general, the ratio of Kappa to Lambda is 3:1. However, with the occurrence of multiple myeloma or other B-cell malignancies this ratio is disturbed. Antibody to the kappa light chain is reportedly useful in the identification of leukemias, plasmacytomas, and certain non-Hodgkin's lymphomas. Demonstration of clonality in lymphoid infiltrates indicates that the infiltrate is malignant.

## Application Notes

The concentration stated for each application is a general starting point. Variations in protocols, secondaries and substrates may require the Kappa antibody to be titrated up or down for optimal performance.

1. The prediluted format is supplied in a dropper bottle and is optimized for use in IHC. After epitope retrieval step (if required), drip mAb solution onto the tissue section and incubate at RT for 30 min.

## Immunogen

Human Kappa light chain was used as the immunogen for this Kappa antibody.

## Storage

Store the Kappa antibody at 2-8°C (with azide) or aliquot and store at -20°C or colder (without azide).