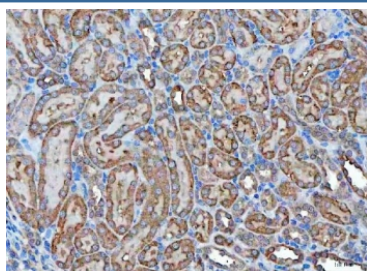


## Kallikrein 7 Antibody / Kik7 (RQ8295)

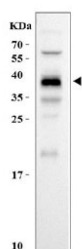
Catalog No.	Formulation	Size
RQ8295	0.5mg/ml if reconstituted with 0.2ml sterile DI water	100 ug

**Bulk quote request**

<b>Availability</b>	1-3 business days
<b>Species Reactivity</b>	Rat
<b>Format</b>	Antigen affinity purified
<b>Clonality</b>	Polyclonal (rabbit origin)
<b>Isotype</b>	Rabbit IgG
<b>Purity</b>	Antigen affinity purified
<b>Buffer</b>	Lyophilized from 1X PBS with 2% Trehalose
<b>UniProt</b>	P36373
<b>Applications</b>	Western Blot : 0.5-1ug/ml Immunohistochemistry (FFPE) : 2-5ug/ml Direct ELISA : 0.1-0.5ug/ml
<b>Limitations</b>	This Kallikrein 7 antibody is available for research use only.



IHC staining of FFPE rat kidney tissue with Kallikrein 7 antibody. HIER: boil tissue sections in pH8 EDTA for 20 min and allow to cool before testing.



Western blot testing of rat kidney tissue with Kallikrein 7 antibody. Predicted molecular weight ~29 kDa but may be observed at higher molecular weights due to glycosylation.

## Description

Kallikrein-related peptidase 7 (KLK7) is a serine protease that in humans is encoded by the KLK7 gene. KLK7 is a chymotrypsin-like serine protease of the member of peptidase S1 family. It is synthesized with a signal peptide of 22 amino acids (aa 1-22) and a propeptide region (aa 23-29) that are subsequently cleaved to generate the mature form. Human KLK7 displays about 40 to 60% amino acid homology with other members of the family. It cleaves proteins with aromatic side chains in the P1 position. KLK7 is abundantly expressed in the skin and is also present in the brain, mammary gland, cerebellum, spinal cord, and kidney. Lower levels of expression have been reported in in salivary glands, uterus, thymus, thyroid, placenta, trachea, and testis. Its levels are shown to be up-regulated in ovarian carcinoma, especially late-stage serous carcinoma. Less differentiated tumors of more advanced stage show higher level KLK7 expression. KLK7 activity is inhibited by zinc and copper ions

## Application Notes

Optimal dilution of the Kallikrein 7 antibody should be determined by the researcher.

## Immunogen

An E.coli-derived rat recombinant protein (K30-N238) was used as the immunogen for the Kallikrein 7 antibody.

## Storage

After reconstitution, the Kallikrein 7 antibody can be stored for up to one month at 4oC. For long-term, aliquot and store at -20oC. Avoid repeated freezing and thawing.