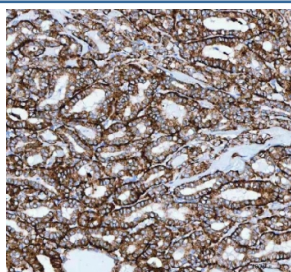


## Josephin 2 Antibody / JOSD2 (RQ8573)

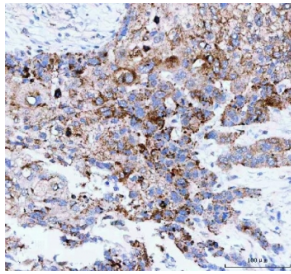
Catalog No.	Formulation	Size
RQ8573	0.5mg/ml if reconstituted with 0.2ml sterile DI water	100 ug

**Bulk quote request**

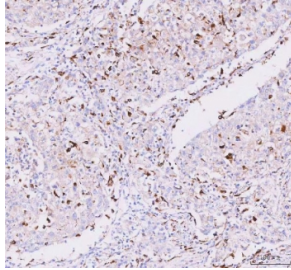
<b>Availability</b>	1-3 days
<b>Species Reactivity</b>	Human, Mouse, Rat
<b>Format</b>	Antigen affinity purified
<b>Clonality</b>	Polyclonal (rabbit origin)
<b>Isotype</b>	Rabbit IgG
<b>Purity</b>	Antigen affinity purified
<b>Buffer</b>	Lyophilized from 1X PBS with 2% Trehalose
<b>UniProt</b>	Q8TAC2
<b>Localization</b>	Cytoplasm
<b>Applications</b>	Western Blot : 0.5-1ug/ml Immunohistochemistry (FFPE) : 2-5ug/ml Flow Cytometry : 1-3ug/million cells ELISA : 0.1-0.5ug/ml
<b>Limitations</b>	This Josephin 2 antibody is available for research use only.



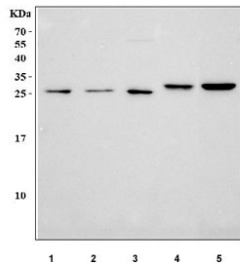
IHC staining of FFPE human thyroid papillary carcinoma tissue with Josephin 2 antibody.  
HIER: boil tissue sections in pH8 EDTA for 20 min and allow to cool before testing.



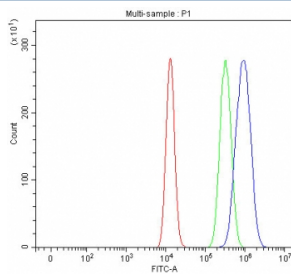
IHC staining of FFPE human esophageal squamous carcinoma tissue with Josephin 2 antibody. HIER: boil tissue sections in pH8 EDTA for 20 min and allow to cool before testing.



IHC staining of FFPE human lung cancer tissue with Josephin 2 antibody. HIER: boil tissue sections in pH8 EDTA for 20 min and allow to cool before testing.



Western blot testing of 1) human A549, 2) human PC-3, 3) human MCF7, 4) rat liver and 5) mouse liver tissue lysate with Josephin 2 antibody. Predicted molecular weight ~21 kDa.



Flow cytometry testing of fixed and permeabilized human HEL cells with Josephin 2 antibody at 1ug/million cells (blocked with goat sera); Red=cells alone, Green=isotype control, Blue= Josephin 2 antibody.

## Description

JOSD2 (Josephin-2) is a member of the Machado-Joseph Domain (MJD) deubiquitinating enzyme family. Other family members include: Ataxin-3, Ataxin-3L, and JOSD1. JOSD2 preferentially cleaves K63-linked ubiquitin chains, with much weaker activity toward K48-linked ubiquitin chains in vitro.

## Application Notes

Optimal dilution of the Josephin 2 antibody should be determined by the researcher.

## Immunogen

An E.coli-derived human recombinant protein (amino acids M1-D188) was used as the immunogen for the Josephin 2 antibody.

## Storage

After reconstitution, the Josephin 2 antibody can be stored for up to one month at 4°C. For long-term, aliquot and store at -20°C. Avoid repeated freezing and thawing.

