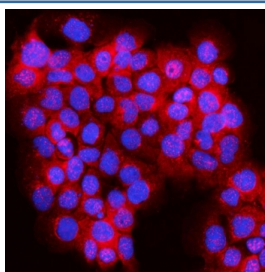


## JLP Antibody / SPAG9 / JIP-4 (RQ8107)

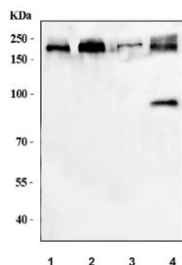
Catalog No.	Formulation	Size
RQ8107	0.5mg/ml if reconstituted with 0.2ml sterile DI water	100 ug

**Bulk quote request**

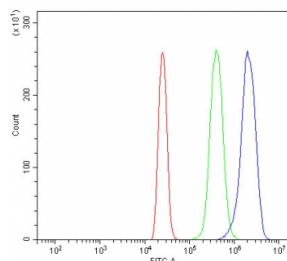
<b>Availability</b>	1-3 business days
<b>Species Reactivity</b>	Human, Mouse, Rat
<b>Format</b>	Antigen affinity purified
<b>Clonality</b>	Polyclonal (rabbit origin)
<b>Isotype</b>	Rabbit IgG
<b>Purity</b>	Antigen affinity purified
<b>Buffer</b>	Lyophilized from 1X PBS with 2% Trehalose
<b>UniProt</b>	O60271
<b>Localization</b>	Cytoplasm
<b>Applications</b>	Western Blot : 0.5-1ug/ml Immunofluorescence : 5ug/ml Flow Cytometry : 1-3ug/million cells Direct ELISA : 0.1-0.5ug/ml
<b>Limitations</b>	This JLP antibody is available for research use only.



Immunofluorescent staining of FFPE human A431 cells with JLP antibody (red) and DAPI nuclear stain (blue). HIER: steam section in pH6 citrate buffer for 20 min.



Western blot testing of 1) human HeLa, 2) human PC-3, 3) rat testis and 4) mouse testis tissue lysate with JLP antibody. Predicted molecular weight ~146 kDa, can be observed at ~190 kDa.



Flow cytometry testing of human HL60 cells with JLP antibody at 1ug/million cells (blocked with goat sera); Red=cells alone, Green=isotype control, Blue= JLP antibody.

## Description

C-jun-amino-terminal kinase-interacting protein 4 (JIP-4), also called JNK-associated leucine-zipper protein (JLP), is a scaffold protein that in humans is encoded by the SPAG9 gene. This gene encodes a member of the cancer testis antigen gene family. The encoded protein functions as a scaffold protein that structurally organizes mitogen-activated protein kinases and mediates c-Jun-terminal kinase signaling. This protein also binds to kinesin-1 and may be involved in microtubule-based membrane transport. This protein may play a role in tumor growth and development. Alternate splicing results in multiple transcript variants.

## Application Notes

Optimal dilution of the JLP antibody should be determined by the researcher.

## Immunogen

E. coli-derived recombinant human protein (amino acids A281-K964) was used as the immunogen for the JLP antibody.

## Storage

After reconstitution, the JLP antibody can be stored for up to one month at 4°C. For long-term, aliquot and store at -20°C. Avoid repeated freezing and thawing.