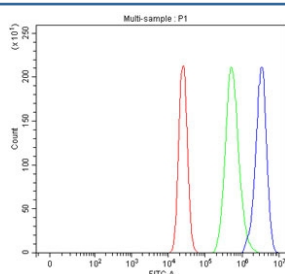


## ITPK1 Antibody / Inositol-tetrakisphosphate 1-kinase (RQ8662)

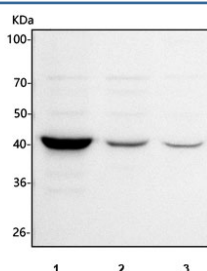
Catalog No.	Formulation	Size
RQ8662	0.5mg/ml if reconstituted with 0.2ml sterile DI water	100 ug

**Bulk quote request**

<b>Availability</b>	1-3 days
<b>Species Reactivity</b>	Human
<b>Format</b>	Antigen affinity purified
<b>Clonality</b>	Polyclonal (rabbit origin)
<b>Isotype</b>	Rabbit IgG
<b>Purity</b>	Antigen affinity chromatography
<b>Buffer</b>	Lyophilized from 1X PBS with 2% Trehalose
<b>UniProt</b>	Q13572
<b>Applications</b>	Western Blot : 1-2ug/ml Flow Cytometry : 1-3ug/million cells ELISA : 0.1-0.5ug/ml
<b>Limitations</b>	This ITPK1 antibody is available for research use only.



Flow cytometry testing of fixed and permeabilized human MCF-7 cells with ITPK1 antibody at 1ug/million cells (blocked with goat sera); Red=cells alone, Green=isotype control, Blue= ITPK1 antibody.



Western blot testing of human 1) MCF7, 2) 293T and 3) U-251 cell lysate with ITPK1 antibody. Predicted molecular weight ~46 kDa.

## Description

Inositol-tetrakisphosphate 1-kinase is an enzyme that in humans is encoded by the ITPK1 gene. This gene encodes an enzyme that belongs to the inositol 1,3,4-trisphosphate 5/6-kinase family. This enzyme regulates the synthesis of inositol tetraphosphate, and downstream products, inositol pentakisphosphate and inositol hexakisphosphate. Inositol metabolism plays a role in the development of the neural tube. Disruptions in this gene are thought to be associated with neural tube defects. A pseudogene of this gene has been identified on chromosome X.

## Application Notes

Optimal dilution of the ITPK1 antibody should be determined by the researcher.

## Immunogen

An E.coli-derived human recombinant protein (amino acids Q25-Q414) was used as the immunogen for the ITPK1 antibody.

## Storage

After reconstitution, the ITPK1 Antibody can be stored for up to one month at 4oC. For long-term, aliquot and store at -20oC. Avoid repeated freezing and thawing.