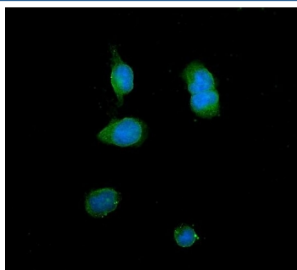


## ITLN1 Antibody / Intelectin-1 (R32441)

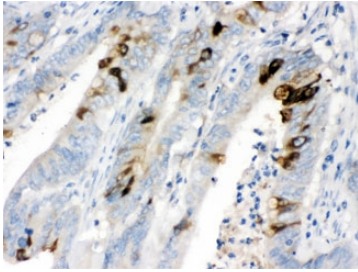
Catalog No.	Formulation	Size
R32441	0.5mg/ml if reconstituted with 0.2ml sterile DI water	100 ug

**Bulk quote request**

<b>Availability</b>	1-3 business days
<b>Species Reactivity</b>	Human
<b>Format</b>	Antigen affinity purified
<b>Clonality</b>	Polyclonal (rabbit origin)
<b>Isotype</b>	Rabbit IgG
<b>Purity</b>	Antigen affinity
<b>Buffer</b>	Lyophilized from 1X PBS with 2.5% BSA and 0.025% sodium azide
<b>UniProt</b>	Q8WWA0
<b>Localization</b>	Cytoplasmic
<b>Applications</b>	Western Blot : 0.5-1ug/ml Immunohistochemistry (FFPE) : 1-2ug/ml Immunofluorescence (FFPE) : 2-4ug/ml Flow Cytometry : 1-3ug/million cells
<b>Limitations</b>	This ITLN1 antibody is available for research use only.



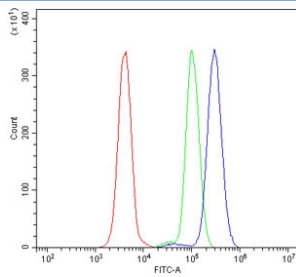
Immunofluorescent staining of FFPE human U-2 OS cells with ITLN1 antibody (green) and DAPI nuclear stain (blue). HIER: steam section in pH6 citrate buffer for 20 min.



IHC testing of FFPE human intestinal cancer tissue with ITLN1 antibody at 1ug/ml.  
HIER: steam in pH6 citrate buffer and allow to cool prior to staining.



Western blot testing of human SW620 cell lysate with ITLN1 antibody at 0.5ug/ml.  
Expected molecular weight: 35-40 kDa.



Flow cytometry testing of human U937 cells with ITLN1 antibody at 1ug/million cells  
(blocked with goat sera); Red=cells alone, Green=isotype control, Blue= ITLN1 antibody.

## Description

Intelectin-1, also known as omentin, is an intelectin encoded in humans by the ITLN1 gene. This gene is mapped to chromosome 1q21.3-q22 by genomic sequence analysis. It is expressed on multiple cell types and appears to participate in insulin signaling and microbe recognition. Intelectin-1 functions both as a receptor for bacterial arabinogalactans and for lactoferrin. Having conserved ligand binding site residues, both human and mouse intelectin-1 bind the exocyclic vicinal diol of carbohydrate ligands such as galactofuranose.

## Application Notes

Optimal dilution of the ITLN1 antibody should be determined by the researcher.

## Immunogen

Amino acids TDEANTYFKEWTCSSPSLPRSCKEIKDECPSAFDGLYFLR were used as the immunogen for the ITLN1 antibody.

## Storage

Prior to reconstitution, store at 4oC. After reconstitution, the ITLN1 antibody can be stored for up to one month at 4oC. For long-term, aliquot and store at -20oC. Avoid repeated freezing and thawing.

