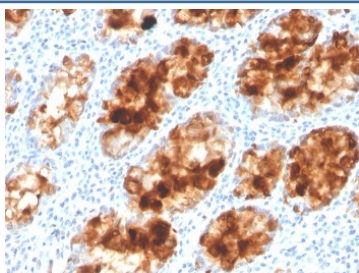


## ITLN1 Antibody / Intelectin 1 [clone ITLN1/4063] (V8684)

Catalog No.	Formulation	Size
V8684-100UG	0.2 mg/ml in 1X PBS with 0.1 mg/ml BSA (US sourced) and 0.05% sodium azide	100 ug
V8684-20UG	0.2 mg/ml in 1X PBS with 0.1 mg/ml BSA (US sourced) and 0.05% sodium azide	20 ug
V8684SAF-100UG	1 mg/ml in 1X PBS; BSA free, sodium azide free	100 ug

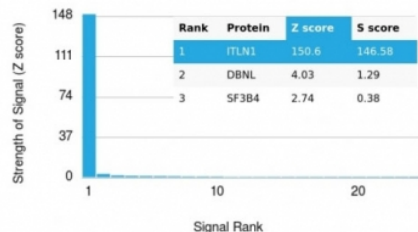
**Bulk quote request**

<b>Availability</b>	1-3 business days
<b>Species Reactivity</b>	Human
<b>Format</b>	Purified
<b>Clonality</b>	Monoclonal (mouse origin)
<b>Isotype</b>	Mouse IgG1, kappa
<b>Clone Name</b>	ITLN1/4063
<b>Purity</b>	Protein G affinity chromatography
<b>UniProt</b>	Q8WWA0
<b>Localization</b>	Cytoplasm, cell membrane, secreted
<b>Applications</b>	Immunohistochemistry (FFPE) : 1-2ug/ml for 30 minutes at RT
<b>Limitations</b>	This ITLN1 antibody is available for research use only.

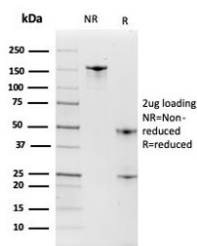


IHC staining of FFPE human colon with ITLN1 antibody. HIER: boil tissue sections in pH 9 10mM Tris with 1mM EDTA for 20 min and allow to cool before testing.

#### Human Protein Microarray Specificity Validation



Analysis of HuProt(TM) microarray containing more than 19,000 full-length human proteins using ITLN1 antibody. These results demonstrate the foremost specificity of the ITLN1/4063 mAb. Z- and S- score: The Z-score represents the strength of a signal that an antibody (in combination with a fluorescently-tagged anti-IgG secondary Ab) produces when binding to a particular protein on the HuProt(TM) array. Z-scores are described in units of standard deviations (SD's) above the mean value of all signals generated on that array. If the targets on the HuProt(TM) are arranged in descending order of the Z-score, the S-score is the difference (also in units of SD's) between the Z-scores. The S-score therefore represents the relative target specificity of an Ab to its intended target.



SDS-PAGE analysis of purified, BSA-free ITLN1 antibody as confirmation of integrity and purity.

## Description

Human intelectin-1 (ITLN-1) is a novel identified galactose binding lectin that is usually expressed in the heart, small intestine, and colon. In normal tissues, human intelectin-1 was mainly secreted from gastrointestinal goblet cells along with mucus into the intestinal lumen, and it was also expressed, to a lesser extent, in mesothelial cells and urinary epithelial cells. It is overexpressed in human malignant pleural mesothelioma (MPM). In contrast, sarcomatoid-type MPMs, biphasic MPMs, and poorly differentiated MPMs are rarely positive for intelectin-1, and it is not expressed in other cancers, except in mucus-producing adenocarcinoma.

## Application Notes

Optimal dilution of the ITLN1 antibody should be determined by the researcher.

## Immunogen

A portion of amino acids 16-141 from the human protein was used as the immunogen for the ITLN1 antibody.

## Storage

Store the ITLN1 antibody at 2-8oC (with azide) or aliquot and store at -20oC or colder (without azide).