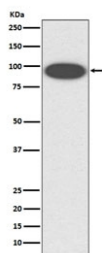


ITGB2 Antibody / CD18 / LFA-1 [clone AAIH-9] (RQ5103)

Catalog No.	Formulation	Size
RQ5103	Antibody in PBS with 0.02% sodium azide, 50% glycerol and 0.4-0.5mg/ml BSA	100 ul

[Bulk quote request](#)

Availability	1-2 weeks
Species Reactivity	Human
Format	Purified
Clonality	Rabbit Monoclonal
Isotype	Rabbit IgG
Clone Name	AAIH-9
Purity	Affinity purified
UniProt	P05107
Applications	Western Blot : 1:500-1:2000
Limitations	This ITGB2 antibody is available for research use only.



Western blot testing of human K562 cell lysate with ITGB2 antibody. Expected molecular weight: 85~95 kDa depending on glycosylation level.

Description

This gene encodes an integrin beta chain, which combines with multiple different alpha chains to form different integrin heterodimers. Integrins are integral cell-surface proteins that participate in cell adhesion as well as cell-surface mediated signalling. Integrin beta 2 plays an important role in immune response and defects in this gene cause leukocyte adhesion deficiency. Alternative splicing results in multiple transcript variants. [RefSeq]

Application Notes

Optimal dilution of the ITGB2 antibody should be determined by the researcher.

Immunogen

A synthetic peptide specific to human Integrin beta 2 was used as the immunogen for the ITGB2 antibody.

Storage

Store the ITGB2 antibody at -20oC.