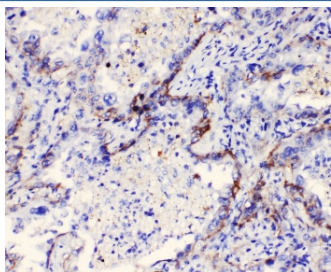


## ITGA3 Antibody / Integrin alpha 3 (RQ4580)

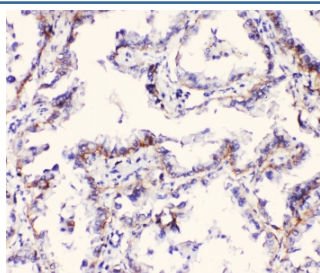
Catalog No.	Formulation	Size
RQ4580	0.5mg/ml if reconstituted with 0.2ml sterile DI water	100 ug

**Bulk quote request**

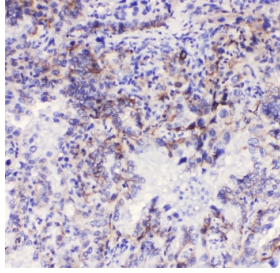
<b>Availability</b>	1-3 business days
<b>Species Reactivity</b>	Human, Mouse
<b>Format</b>	Antigen affinity purified
<b>Clonality</b>	Polyclonal (rabbit origin)
<b>Isotype</b>	Rabbit IgG
<b>Purity</b>	Antigen affinity purified
<b>Buffer</b>	Lyophilized from 1X PBS with 2% Trehalose and 0.025% sodium azide
<b>UniProt</b>	P26006
<b>Localization</b>	Plasma membrane
<b>Applications</b>	Western Blot : 0.5-1ug/ml Immunohistochemistry (FFPE) : 1-2ug/ml Immunofluorescence/Immunocytochemistry (FFPE) : 2-4ug/ml
<b>Limitations</b>	This ITGA3 antibody is available for research use only.



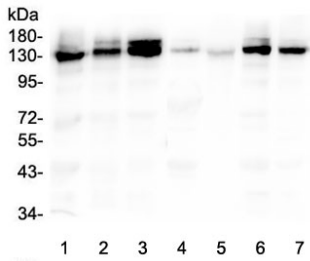
IHC staining of FFPE human lung cancer with ITGA3 antibody at 1ug/ml. HIER: boil tissue sections in pH6, 10mM citrate buffer, for 10-20 min followed by cooling at RT for 20 min.



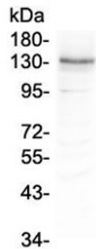
IHC staining of FFPE human lung cancer with ITGA3 antibody at 1ug/ml. HIER: boil tissue sections in pH6, 10mM citrate buffer, for 10-20 min followed by cooling at RT for 20 min.



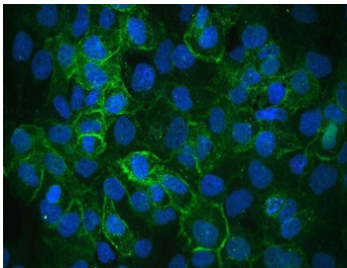
IHC staining of FFPE human lung cancer with ITGA3 antibody at 1ug/ml. HIER: boil tissue sections in pH6, 10mM citrate buffer, for 10-20 min followed by cooling at RT for 20 min.



Western blot testing of human 1) A549, 2) PC-3, 3) A431, 4) placenta, 5) SHG-44, 6) U-2 OS and 7) HeLa lysate with ITGA3 antibody at 0.5ug/ml. Expected molecular weight: 119-150 kDa depending on glycosylation level.



Western blot testing of mouse HEPA1-6 lysate with ITGA3 antibody at 0.5ug/ml. Expected molecular weight: 119-150 kDa depending on glycosylation level.



IF/ICC staining of FFPE human A431 cells with ITGA3 antibody (green) at 2ug/ml and DAPI nuclear stain (blue). HIER: steam section in pH6 citrate buffer for 20 min.

## Description

ITGA3 (INTEGRIN, ALPHA-3), also called CD49C, VLA3 or GAPB3, is a protein that in humans is encoded by the ITGA3 gene. It is an integrin alpha subunit which is also a member of the family of cell surface adhesion molecules. This gene is mapped to chromosome 17 and its exact cytogenetic location is 17q21.33. ITGA3 makes up half of the  $\alpha 3\beta 1$  integrin duplex that plays a role in neural migration and corticogenesis together with beta-1 subunit. A functional link between DAB1 phosphorylation and ITGA3 signaling drives the timely detachment of migrating neurons from radial glial fibers. Expression of human ITGA3 increased the infectivity of virus for Chinese hamster ovary cells. ITGA3 also contains 13 potential N-glycosylation sites, 2 potential cleavage sites, and the 7 N-terminal repeating units characteristic of ITGAs. Recombinant ITGA3 is expressed as a 150-kD protein as the same size as the native protein by the western blot analysis.

## Application Notes

Optimal dilution of the ITGA3 antibody should be determined by the researcher.

## Immunogen

Amino acids YSVALHRQTERQQRYLLLAGAPRELAVPDGYTNR were used as the immunogen for the ITGA3 antibody.

## Storage

After reconstitution, the ITGA3 antibody can be stored for up to one month at 4oC. For long-term, aliquot and store at -20oC. Avoid repeated freezing and thawing.