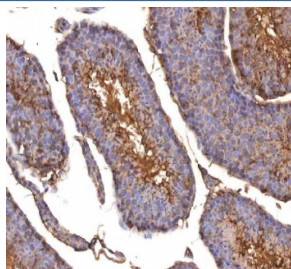


## ISYNA1 Antibody / Inositol-3-phosphate synthase 1 / INO1 (RQ8690)

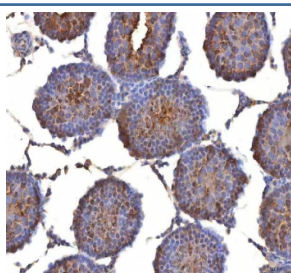
Catalog No.	Formulation	Size
RQ8690	0.5mg/ml if reconstituted with 0.2ml sterile DI water	100 ug

**Bulk quote request**

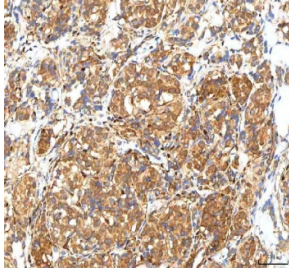
<b>Availability</b>	1-3 days
<b>Species Reactivity</b>	Human, Mouse, Rat
<b>Format</b>	Antigen affinity purified
<b>Clonality</b>	Polyclonal (rabbit origin)
<b>Isotype</b>	Rabbit IgG
<b>Purity</b>	Antigen affinity chromatography
<b>Buffer</b>	Lyophilized from 1X PBS with 2% Trehalose
<b>UniProt</b>	Q9NPH2
<b>Localization</b>	Cytoplasm, Nucleus
<b>Applications</b>	Western Blot : 1-2ug/ml Immunohistochemistry (FFPE) : 2-5ug/ml ELISA : 0.1-0.5ug/ml
<b>Limitations</b>	This ISYNA1 antibody is available for research use only.



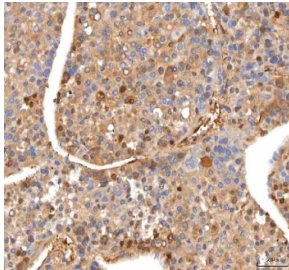
IHC staining of FFPE mouse testis tissue with ISYNA1 antibody. HIER: boil tissue sections in pH8 EDTA for 20 min and allow to cool before testing.



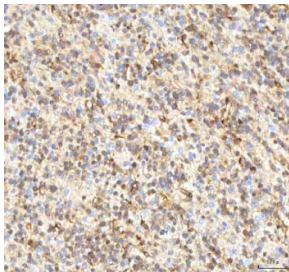
IHC staining of FFPE rat testis tissue with ISYNA1 antibody. HIER: boil tissue sections in pH8 EDTA for 20 min and allow to cool before testing.



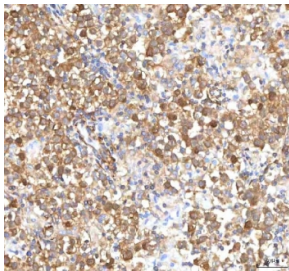
IHC staining of FFPE human lung cancer tissue with ISYNA1 antibody. HIER: boil tissue sections in pH8 EDTA for 20 min and allow to cool before testing.



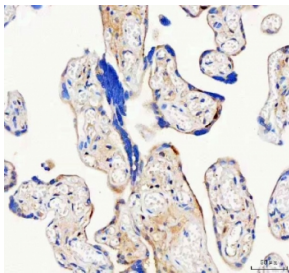
IHC staining of FFPE human liver cancer tissue with ISYNA1 antibody. HIER: boil tissue sections in pH8 EDTA for 20 min and allow to cool before testing.



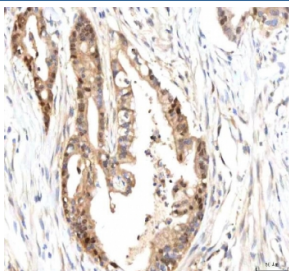
IHC staining of FFPE human glioblastoma tissue with ISYNA1 antibody. HIER: boil tissue sections in pH8 EDTA for 20 min and allow to cool before testing.



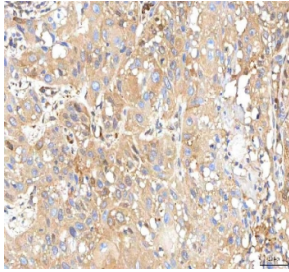
IHC staining of FFPE human testicular seminoma tissue with ISYNA1 antibody. HIER: boil tissue sections in pH8 EDTA for 20 min and allow to cool before testing.



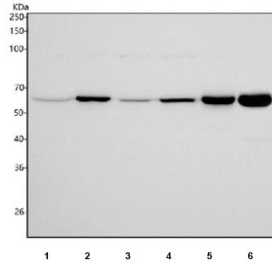
IHC staining of FFPE human placental tissue with ISYNA1 antibody. HIER: boil tissue sections in pH8 EDTA for 20 min and allow to cool before testing.



IHC staining of FFPE human pancreas ductal adenocarcinoma tissue with ISYNA1 antibody. HIER: boil tissue sections in pH8 EDTA for 20 min and allow to cool before testing.



IHC staining of FFPE human urothelial carcinoma tissue with ISYNA1 antibody. HIER: boil tissue sections in pH8 EDTA for 20 min and allow to cool before testing.



Western blot testing of 1) human HepG2, 2) human K562, 3) human 293T, 4) human HEL, 5) rat testis and 6) mouse testis tissue lysate with ISYNA1 antibody. Predicted molecular weight ~61 kDa.

## Description

This gene encodes an inositol-3-phosphate synthase enzyme. The encoded protein plays a critical role in the myo-inositol biosynthesis pathway by catalyzing the rate-limiting conversion of glucose 6-phosphate to myoinositol 1-phosphate. Alternatively spliced transcript variants encoding multiple isoforms have been observed for this gene, and a pseudogene of this gene is located on the short arm of chromosome 4.

## Application Notes

Optimal dilution of the ISYNA1 antibody should be determined by the researcher.

## Immunogen

An E.coli-derived human recombinant protein (amino acids Q24-H454) was used as the immunogen for the ISYNA1 antibody.

## Storage

After reconstitution, the ISYNA1 Antibody can be stored for up to one month at 4°C. For long-term, aliquot and store at -20°C. Avoid repeated freezing and thawing.