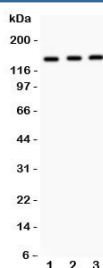


## IRS1 Antibody (R31636)

Catalog No.	Formulation	Size
R31636	0.5mg/ml if reconstituted with 0.2ml sterile DI water	100 ug

**Bulk quote request**

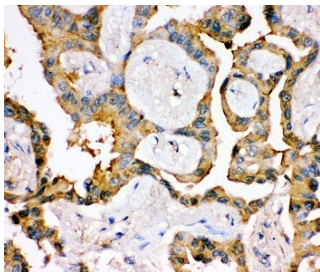
<b>Availability</b>	1-3 business days
<b>Species Reactivity</b>	Human, Mouse, Rat
<b>Format</b>	Antigen affinity purified
<b>Clonality</b>	Polyclonal (rabbit origin)
<b>Isotype</b>	Rabbit IgG
<b>Purity</b>	Antigen affinity
<b>Buffer</b>	Lyophilized from 1X PBS with 2.5% BSA and 0.025% sodium azide
<b>Gene ID</b>	3667
<b>Applications</b>	Western Blot : 0.5-1ug/ml IHC (FFPE) : 0.5-1ug/ml
<b>Limitations</b>	This IRS1 antibody is available for research use only.



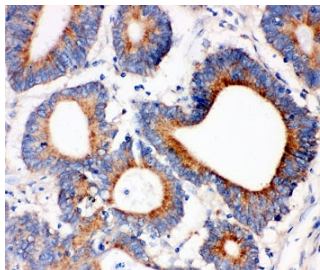
Western blot testing of IRS1 antibody and Lane 1: A549; 2: MM453; 3: Jurkat. Expected size: 132~185KD depending on serine phosphorylation level



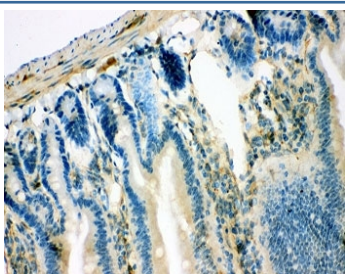
Western blot testing of IRS1 antibody and recombinant human protein (0.5ng)



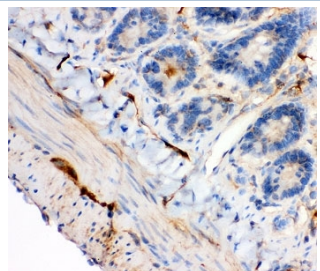
IHC-P: IRS1 antibody testing of human lung cancer tissue



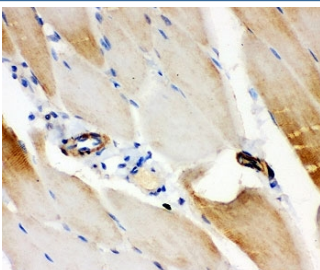
IHC-P: IRS1 antibody testing of human intestinal cancer tissue



IHC-P: IRS1 antibody testing of mouse intestine tissue



IHC-P: IRS1 antibody testing of rat intestine tissue



IHC-P: IRS1 antibody testing of rat skeletal muscle tissue

## Description

Insulin receptor substrate 1 is a signalling adapter protein that in humans is encoded by the IRS1 gene. It is mapped to 2q36.3. This gene exhibited no intrinsic enzyme activity, and it can serve as a docking protein involved in binding and activating other signal transduction molecules after being phosphorylated on tyrosine by insulin receptor kinase. IRS1 plays a key role in transmitting signals from the insulin and insulin-like growth factor-1(IGF-1) receptors to intracellular pathways PI3K/Akt and Erk MAP kinase pathways. IRS1 also has important biological function for both metabolic and mitogenic(growth promoting) pathways. In addition to those, it is a key regulator of PI3K within malignant cells.

## Application Notes

Titration of the IRS1 antibody may be required due to differences in protocols and secondary/substrate sensitivity.

## **Immunogen**

Human partial recombinant protein (AA 1041-1242) was used as the immunogen for this IRS1 antibody.

## **Storage**

The lyophilized IRS1 antibody can be stored at 4oC to -20oC. After reconstitution, aliquot and store at -20oC. Avoid repeated freeze/thaws.