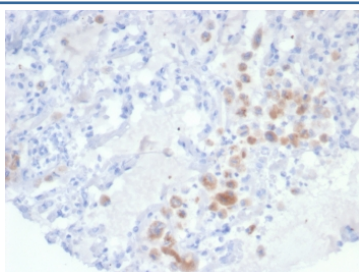


IRS1 Antibody / Insulin receptor substrate 1 [clone IRS1/7571] (V4958)

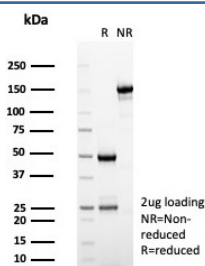
| Catalog No. | Formulation | Size |
|----------------|---|--------|
| V4958-100UG | 0.2 mg/ml in 1X PBS with 0.1 mg/ml BSA (US sourced), 0.05% sodium azide | 100 ug |
| V4958-20UG | 0.2 mg/ml in 1X PBS with 0.1 mg/ml BSA (US sourced), 0.05% sodium azide | 20 ug |
| V4958SAF-100UG | 1 mg/ml in 1X PBS; BSA free, sodium azide free | 100 ug |

[Bulk quote request](#)

| | |
|---------------------------|---|
| Availability | 1-3 business days |
| Species Reactivity | Human |
| Format | Purified |
| Clonality | Monoclonal (mouse origin) |
| Isotype | Mouse IgG2, kappa |
| Clone Name | IRS1/7571 |
| Purity | Protein A/G affinity |
| UniProt | P35568 |
| Localization | Cytoplasm, Cell surface, Nucleus |
| Applications | Immunohistochemistry (FFPE) : 1-2ug/ml for 30 min at RT |
| Limitations | This IRS1 antibody is available for research use only. |



IHC staining of FFPE human lung tissue with IRS1 antibody (clone IRS1/7571). HIER: boil tissue sections in pH 9 10mM Tris with 1mM EDTA for 20 min and allow to cool before testing.



SDS-PAGE analysis of purified, BSA-free IRS1 antibody (clone IRS1/7571) as confirmation of integrity and purity.

Description

The Insulin receptor substrate-1 (IRS-1), a protein major substrate of the Insulin receptor, is phosphorylated in response to stimulation of cells by Insulin, Insulin-like growth factor 1 (IGF-1) and interleukin 4 (IL-4). IRS-1 is phosphorylated on serine, threonine and tyrosine residues in a variety of tissues. An Insulin-sensitive serine/threonine kinase casein kinase II mediates a portion of the Insulin-stimulated serine/threonine phosphorylation of overexpressed IRS-1 in vivo.

Application Notes

Optimal dilution of the IRS1 antibody should be determined by the researcher.

Immunogen

A recombinant partial protein sequence (within amino acids 1-200) from the human protein was used as the immunogen for the IRS1 antibody.

Storage

Aliquot the IRS1 antibody and store frozen at -20oC or colder. Avoid repeated freeze-thaw cycles.