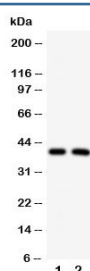


## IRF2 Antibody (R30916)

Catalog No.	Formulation	Size
R30916	0.5mg/ml if reconstituted with 0.2ml sterile DI water	100 ug

**Bulk quote request**

<b>Availability</b>	1-3 business days
<b>Species Reactivity</b>	Human, Mouse, Rat
<b>Format</b>	Antigen affinity purified
<b>Clonality</b>	Polyclonal (rabbit origin)
<b>Isotype</b>	Rabbit IgG
<b>Purity</b>	Antigen affinity
<b>Buffer</b>	Lyophilized from 1X PBS with 2.5% BSA and 0.025% sodium azide/thimerosal
<b>UniProt</b>	P14316
<b>Applications</b>	Western Blot : 0.5-1ug/ml
<b>Limitations</b>	This IRF2 antibody is available for research use only.



Western blot testing of IRF2 antibody and Lane 1: HeLa; 2: MCF-7 cell lysate. Estimated molecular weight: ~39kDa but routinely observed at 39-50kDa.

## Description

Interferon regulatory factor 2 is a member of the interferon regulatory transcription factor (IRF) family. The IRF2 gene is mapped on 4q35.1. When the gene was overexpressed in NIH 3T3 cells, the cells became transformed and displayed enhanced tumorigenicity in nude mice. One IRF binding site was found within the IRF2 promoter, and expression of the gene was affected by both transient and stable IRF1 expression. IRF2 competitively inhibits the IRF1-mediated transcriptional activation of interferons alpha and beta, and presumably other genes that employ IRF1 for transcription activation. However, IRF2 also functions as a transcriptional activator of histone H4. IRF2 was required to prevent NK-cell apoptosis and keep immature NK cells alive, thus promoting NK-cell maturation and their supply to peripheral blood.

## Application Notes

The stated application concentrations are suggested starting amounts. Titration of the IRF2 antibody may be required due to differences in protocols and secondary/substrate sensitivity.

## Immunogen

An amino acid sequence from the C-terminus of human Interferon regulatory factor 2 (RPHWRKRNIEGKQYLSNM) was used as the immunogen for this IRF2 antibody (100% rat homology).

## Storage

After reconstitution, the IRF2 antibody can be stored for up to one month at 4°C. For long-term, aliquot and store at -20°C. Avoid repeated freezing and thawing.