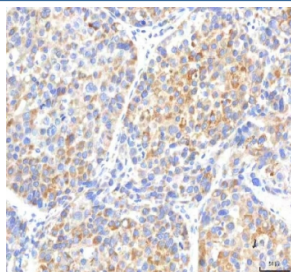


IPO8 Antibody / Importin 8 (RQ8721)

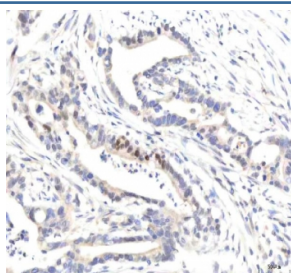
Catalog No.	Formulation	Size
RQ8721	0.5mg/ml if reconstituted with 0.2ml sterile DI water	100 ug

Bulk quote request

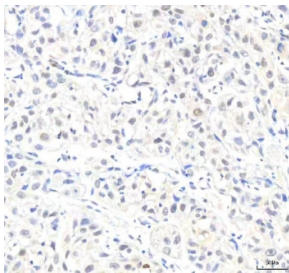
Availability	1-3 days
Species Reactivity	Human
Format	Antigen affinity purified
Clonality	Polyclonal (rabbit origin)
Isotype	Rabbit IgG
Purity	Antigen affinity chromatography
Buffer	Lyophilized from 1X PBS with 2% Trehalose
UniProt	O15397
Localization	Nuclear, cytoplasmic
Applications	Western Blot : 1-2ug/ml Immunohistochemistry (FFPE) : 2-5ug/ml ELISA : 0.1-0.5ug/ml
Limitations	This IPO8 antibody is available for research use only.



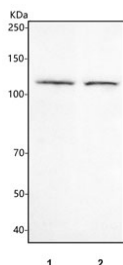
IHC staining of FFPE human liver cancer tissue with IPO8 antibody. HIER: boil tissue sections in pH8 EDTA for 20 min and allow to cool before testing.



IHC staining of FFPE human pancreas ductal adenocarcinoma tissue with IPO8 antibody. HIER: boil tissue sections in pH8 EDTA for 20 min and allow to cool before testing.



IHC staining of FFPE human urothelial carcinoma tissue with IPO8 antibody. HIER: boil tissue sections in pH8 EDTA for 20 min and allow to cool before testing.



Western blot testing of human 1) HeLa and 2) K562 cell lysate with IPO8 antibody. Predicted molecular weight ~120 kDa.

Description

Importin 8 is a protein that in humans is encoded by the IPO8 gene. Importin 8 is a protein that in humans is encoded by the IPO8 gene.

Application Notes

Optimal dilution of the IPO8 antibody should be determined by the researcher.

Immunogen

An E.coli-derived human recombinant protein (amino acids K17-H1000) was used as the immunogen for the IPO8 antibody.

Storage

After reconstitution, the IPO8 antibody can be stored for up to one month at 4oC. For long-term, aliquot and store at -20oC. Avoid repeated freezing and thawing.