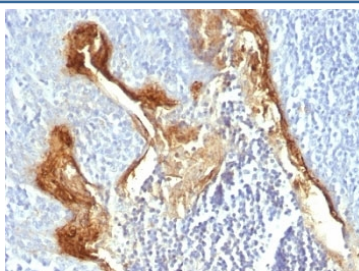


Involucrin Antibody [clone IVRN/827] (V2647)

Catalog No.	Formulation	Size
V2647-100UG	0.2 mg/ml in 1X PBS with 0.1 mg/ml BSA (US sourced) and 0.05% sodium azide	100 ug
V2647-20UG	0.2 mg/ml in 1X PBS with 0.1 mg/ml BSA (US sourced) and 0.05% sodium azide	20 ug
V2647SAF-100UG	1 mg/ml in 1X PBS; BSA free, sodium azide free	100 ug
V2647IHC-7ML	Prediluted in 1X PBS with 0.1 mg/ml BSA (US sourced) and 0.05% sodium azide; *For IHC use only*	7 ml

Bulk quote request

Availability	1-3 business days
Species Reactivity	Human
Format	Purified
Clonality	Monoclonal (mouse origin)
Isotype	Mouse IgG1, kappa
Clone Name	IVRN/827
Purity	Protein G affinity chromatography
UniProt	P07476
Localization	Cytoplasmic
Applications	Immunohistochemistry (FFPE) : 1-2ug/ml for 30 min at RT
Limitations	This Involucrin antibody is available for research use only.



IHC: Formalin-fixed, paraffin-embedded human tonsil stained with Involucrin antibody (clone IVRN/827).

Description

It recognizes a protein of 66kDa-170kDa, identified as involucrin. In Western blotting of cultured human keratinocytes, this mAb reacts with a 120kDa protein. Involucrin is expressed in a range of stratified squamous epithelia, including the cornea, which lacks a distinct cornified layer. In normal epidermis, it is first expressed in the upper spinous layers, and in keratinocyte cultures, all cells that have left the basal layer express it. Involucrin expression is altered in pathological conditions: in psoriasis and other benign epidermal hyperplasias, involucrin expression begins closer to the basal layer than normal; expression is abnormal in squamous cell carcinomas and premalignant lesions, and is reduced in severe dysplasias of the larynx and cervix.

Application Notes

Optimal dilution of the Involucrin antibody should be determined by the researcher.

1. Staining of formalin-fixed tissues is enhanced by digestion with Trypsin or Protease XXV at 1mg/ml PBS for 5 min at 37°C. Enzyme digestion is more effective than Citrate buffer based epitope unmasking.
2. The prediluted format is supplied in a dropper bottle and is optimized for use in IHC. After epitope retrieval step (if required), drip mAb solution onto the tissue section and incubate at RT for 30 min.

Immunogen

Purified involucrin from human keratinocytes was used as the immunogen for the Involucrin antibody.

Storage

Store the Involucrin antibody at 2-8°C (with azide) or aliquot and store at -20°C or colder (without azide).