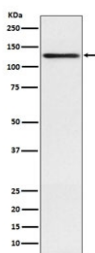


## Involucrin Antibody [clone ABEA-9] (RQ5180)

Catalog No.	Formulation	Size
RQ5180	Antibody in PBS with 0.02% sodium azide, 50% glycerol and 0.4-0.5mg/ml BSA	100 ul

[Bulk quote request](#)

Availability	1-2 weeks
Species Reactivity	Human
Format	Purified
Clonality	Rabbit Monoclonal
Isotype	Rabbit IgG
Clone Name	ABEA-9
Purity	Affinity purified
UniProt	P07476
Applications	Western Blot : 1:1000-1:5000
Limitations	This Involucrin antibody is available for research use only.



Western blot testing of human A431 cell lysate with Involucrin antibody. Predicted molecular weight ~68 kDa but can be observed at up to ~140 kDa.

### Description

Involucrin, a component of the keratinocyte crosslinked envelope, is found in the cytoplasm and crosslinked to membrane proteins by transglutaminase. [RefSeq]

### Application Notes

Optimal dilution of the Involucrin antibody should be determined by the researcher.

### Immunogen

A synthetic peptide specific to human Involucrin / IVL was used as the immunogen for the Involucrin antibody.

## Storage

Store the Involucrin antibody at -20oC.