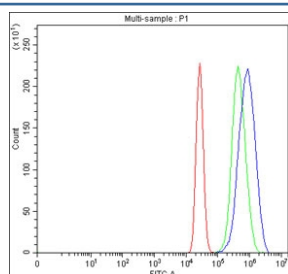


INTS12 Antibody / Integrator complex subunit 12 (RQ8807)

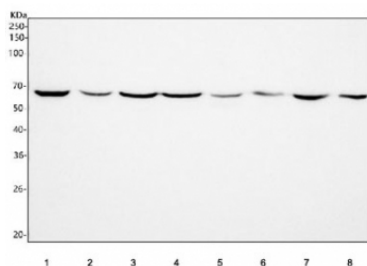
Catalog No.	Formulation	Size
RQ8807	0.5mg/ml if reconstituted with 0.2ml sterile DI water	100 ug

Bulk quote request

Availability	1-3 days
Species Reactivity	Human, Mouse, Rat
Format	Antigen affinity purified
Clonality	Polyclonal (rabbit origin)
Isotype	Rabbit IgG
Purity	Antigen affinity chromatography
Buffer	Lyophilized from 1X PBS with 2% Trehalose
UniProt	Q96CB8
Applications	Western Blot : 1-2ug/ml Flow Cytometry : 1-3ug/million cells ELISA : 0.1-0.5ug/ml
Limitations	This INTS12 antibody is available for research use only.



Flow cytometry testing of fixed and permeabilized human MCF7 cells with INTS12 antibody at 1ug/million cells (blocked with goat sera); Red=cells alone, Green=isotype control, Blue= INTS12 antibody.



Western blot testing of 1) human HepG2, 2) human K562, 3) human Jurkat, 4) human HEL, 5) rat PC-12, 6) rat NRK, 7) mouse RAW264.7 and 8) mouse SP2/0 cell lysate with INTS12 antibody. Predicted molecular weight ~49 kDa but may be observed at higher molecular weights due to sumoylation and phosphorylation.

Description

Component of the Integrator complex, a complex involved in the small nuclear RNAs (snRNA) U1 and U2 transcription and in their 3'-box-dependent processing. The Integrator complex is associated with the C-terminal domain (CTD) of RNA polymerase II largest subunit (POLR2A) and is recruited to the U1 and U2 snRNAs genes. [UniProt]

Application Notes

Optimal dilution of the INTS12 antibody should be determined by the researcher.

Immunogen

An E.coli-derived human recombinant protein (amino acids M1-K384) was used as the immunogen for the INTS12 antibody.

Storage

After reconstitution, the INTS12 Antibody can be stored for up to one month at 4oC. For long-term, aliquot and store at -20oC. Avoid repeated freezing and thawing.