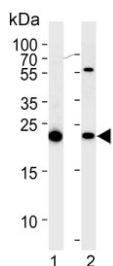


## Interleukin-1 Receptor Antagonist Antibody / IL1RA / IL1RN (F54852)

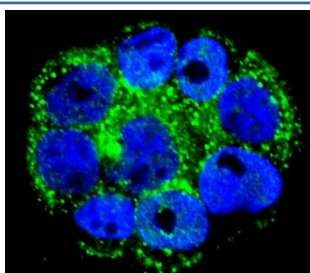
Catalog No.	Formulation	Size
F54852-0.4ML	In 1X PBS, pH 7.4, with 0.09% sodium azide	0.4 ml
F54852-0.08ML	In 1X PBS, pH 7.4, with 0.09% sodium azide	0.08 ml

**Bulk quote request**

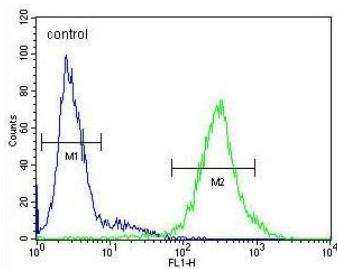
<b>Availability</b>	1-3 business days
<b>Species Reactivity</b>	Human
<b>Format</b>	Purified
<b>Clonality</b>	Polyclonal (rabbit origin)
<b>Isotype</b>	Rabbit Ig
<b>Purity</b>	Purified
<b>UniProt</b>	P18510
<b>Localization</b>	Cytoplasmic
<b>Applications</b>	Western Blot : 1:500-1:1000 Immunofluorescence : 1:10-1:50 Flow Cytometry : 1:10-1:50 (1x10 <sup>6</sup> cells)
<b>Limitations</b>	This Interleukin-1 Receptor Antagonist antibody is available for research use only.



Western blot testing of human 1) HEK293 and 2) HeLa cell lysate with Interleukin-1 Receptor Antagonist antibody. Predicted molecular weight ~20 kDa.



Immunofluorescent staining of human WiDr cells with Interleukin-1 Receptor Antagonist antibody (green) and DAPI nuclear stain (blue).



Flow cytometry testing of human HepG2 cells with Interleukin-1 Receptor Antagonist antibody; Blue=isotype control, Green= Interleukin-1 Receptor Antagonist antibody.

## Description

The protein is a member of the interleukin 1 cytokine family. This protein inhibits the activities of interleukin 1, alpha (IL1A) and interleukin 1, beta (IL1B), and modulates a variety of interleukin 1 related immune and inflammatory responses. A polymorphism of its gene is reported to be associated with increased risk of osteoporotic fractures and gastric cancer.

## Application Notes

The stated application concentrations are suggested starting points. Titration of the Interleukin-1 Receptor Antagonist antibody may be required due to differences in protocols and secondary/substrate sensitivity.

## Immunogen

A portion of amino acids 147-177 from the human protein was used as the immunogen for the Interleukin-1 Receptor Antagonist antibody.

## Storage

Aliquot the Interleukin-1 Receptor Antagonist antibody and store frozen at -20oC or colder. Avoid repeated freeze-thaw cycles.