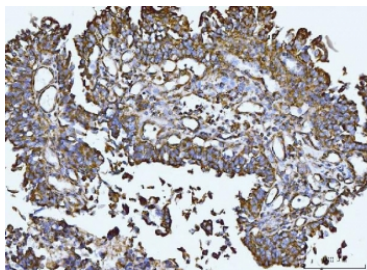


## Integrin linked protein kinase Antibody / ILK (RQ6426)

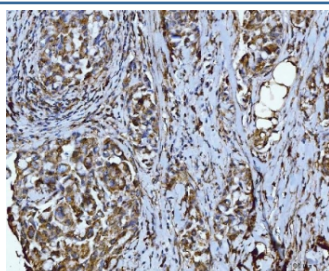
Catalog No.	Formulation	Size
RQ6426	0.5mg/ml if reconstituted with 0.2ml sterile DI water	100 ug

**Bulk quote request**

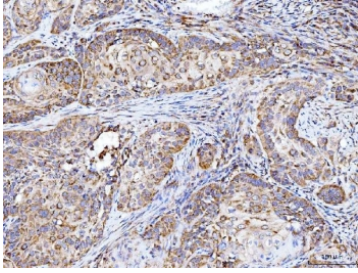
<b>Availability</b>	1-3 business days
<b>Species Reactivity</b>	Human, Mouse, Rat
<b>Format</b>	Purified
<b>Clonality</b>	Polyclonal (rabbit origin)
<b>Isotype</b>	Rabbit IgG
<b>Purity</b>	Antigen affinity purified
<b>Buffer</b>	Lyophilized from 1X PBS with 2% Trehalose
<b>UniProt</b>	Q13418
<b>Applications</b>	Western Blot : 0.5-1ug/ml Immunofluorescence (FFPE) : 5ug/ml Immunohistochemistry (FFPE) : 1-2ug/ml Direct ELISA : 0.1-0.5ug/ml
<b>Limitations</b>	This Integrin linked protein kinase antibody is available for research use only.



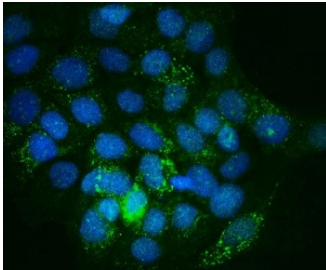
IHC staining of FFPE bladder epithelial carcinoma tissue with Integrin linked protein kinase antibody. HIER: boil tissue sections in pH8 EDTA for 20 min and allow to cool before testing.



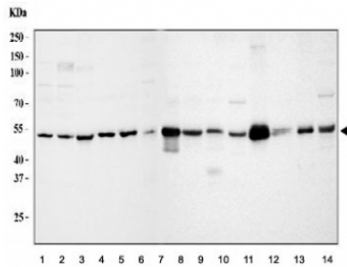
IHC staining of FFPE human breast cancer tissue with Integrin linked protein kinase antibody. HIER: boil tissue sections in pH8 EDTA for 20 min and allow to cool before testing.



IHC staining of FFPE human laryngeal squamous cell carcinoma tissue with Integrin linked protein kinase antibody. HIER: boil tissue sections in pH8 EDTA for 20 min and allow to cool before testing.



Immunofluorescent staining of FFPE human A431 cells with Integrin linked protein kinase antibody (green) and DAPI nuclear stain (blue). HIER: steam section in pH6 citrate buffer for 20 min.



Western blot testing of human 1) MCF7, 2) HeLa, 3) U-87 MG, 4) A431, 5) U-2 OS, 6) PC-3, 7) rat heart, 8) rat kidney, 9) rat skeletal muscle, 10) mouse heart, 11) mouse kidney, 12) mouse skeletal muscle and 13) mouse C2C12 lysate with Integrin linked protein kinase antibody. Expected molecular weight: 51-59 kDa.

## Description

ILK, also known as Integrin-linked kinase, is a serine-threonine protein kinase. Transduction of extracellular matrix signals through integrins influences intracellular and extracellular functions, and appears to require interaction of integrin cytoplasmic domains with cellular proteins. Integrin-linked kinase (ILK) interacts with the cytoplasmic domain of beta-1 integrin. This gene was initially described to encode a serine/ threonine protein kinase with 4 ankyrin-like repeats, which associates with the cytoplasmic domain of beta integrins and acts as a proximal receptor kinase regulating integrin-mediated signal transduction. Multiple alternatively spliced transcript variants encoding the same protein have been found for this gene. Recent results showed that ILK contains 5 ankyrin-like repeats, and that the C-terminal kinase domain is actually a pseudo-kinase with adaptor function.

## Application Notes

Optimal dilution of the Integrin linked protein kinase antibody should be determined by the researcher.

## Immunogen

Recombinant human protein (amino acids R9-K452) was used as the immunogen for the Integrin linked protein kinase antibody.

## Storage

After reconstitution, the Integrin linked protein kinase antibody can be stored for up to one month at 4°C. For long-term, aliquot and store at -20°C. Avoid repeated freezing and thawing.

