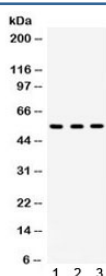


## Integrin linked kinase Antibody / ILK (R32407)

Catalog No.	Formulation	Size
R32407	0.5mg/ml if reconstituted with 0.2ml sterile DI water	100 ug

**Bulk quote request**

<b>Availability</b>	1-3 business days
<b>Species Reactivity</b>	Human, Mouse, Rat
<b>Format</b>	Antigen affinity purified
<b>Clonality</b>	Polyclonal (rabbit origin)
<b>Isotype</b>	Rabbit IgG
<b>Purity</b>	Antigen affinity
<b>Buffer</b>	Lyophilized from 1X PBS with 2.5% BSA and 0.025% sodium azide
<b>UniProt</b>	Q13418
<b>Localization</b>	Cytoplasmic
<b>Applications</b>	Western Blot : 0.1-0.5ug/ml
<b>Limitations</b>	This Integrin linked kinase antibody is available for research use only.



Western blot testing of 1) rat lung, 2) mouse liver and 3) human HeLa lysate with Integrin linked kinase antibody. Expected molecular weight: 51-59 kDa.

## Description

ILK, also known as Integrin-linked kinase, is a serine-threonine protein kinase. Transduction of extracellular matrix signals through integrins influences intracellular and extracellular functions, and appears to require interaction of integrin cytoplasmic domains with cellular proteins. Integrin-linked kinase (ILK) interacts with the cytoplasmic domain of beta-1 integrin. This gene was initially described to encode a serine/ threonine protein kinase with 4 ankyrin-like repeats, which associates with the cytoplasmic domain of beta integrins and acts as a proximal receptor kinase regulating integrin-mediated signal transduction. Multiple alternatively spliced transcript variants encoding the same protein have been found for this gene. Recent results showed that ILK contains 5 ankyrin-like repeats, and that the C-terminal kinase domain is

actually a pseudo-kinase with adaptor function.

## **Application Notes**

Optimal dilution of the Integrin linked kinase antibody should be determined by the researcher.

## **Immunogen**

Amino acids M1-H203 from the human protein were used as the immunogen for the Integrin linked kinase antibody.

## **Storage**

After reconstitution, the Integrin linked kinase antibody can be stored for up to one month at 4oC. For long-term, aliquot and store at -20oC. Avoid repeated freezing and thawing.