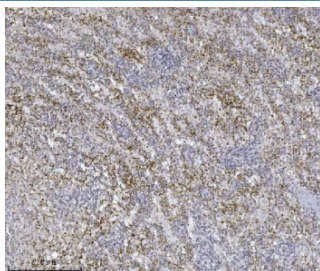


Integrin linked ILK Antibody / Integrin-linked kinase [clone 3C7E1] (RQ7136)

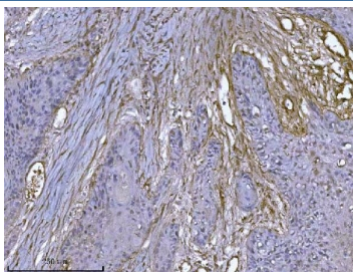
Catalog No.	Formulation	Size
RQ7136	0.5mg/ml if reconstituted with 0.2ml sterile DI water	100 ug

[Bulk quote request](#)

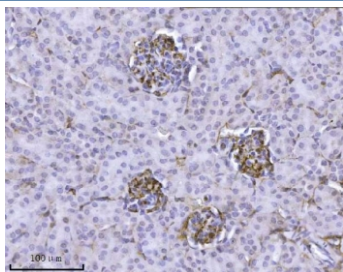
Availability	1-3 business days
Species Reactivity	Human, Mouse, Rat
Format	Antigen affinity purified
Clonality	Monoclonal (mouse origin)
Isotype	Mouse IgG2b
Clone Name	3C7E1
Purity	Antigen affinity purified
Buffer	Lyophilized from 1X PBS with 2% Trehalose
UniProt	Q13418
Localization	Cytoplasmic
Applications	Western Blot : 0.5-1ug/ml Immunohistochemistry (FFPE) : 2-5ug/ml
Limitations	This Integrin linked ILK antibody is available for research use only.



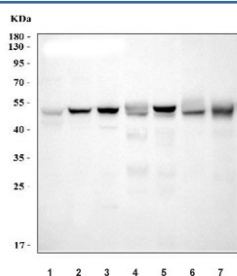
IHC staining of FFPE human spleen tissue with Integrin linked ILK antibody. HIER: boil tissue sections in pH8 EDTA for 20 min and allow to cool before testing.



IHC staining of FFPE human squamous cell lung carcinoma tissue with Integrin linked ILK antibody. HIER: boil tissue sections in pH8 EDTA for 20 min and allow to cool before testing.



IHC staining of FFPE mouse kidney tissue with Integrin linked ILK antibody. HIER: boil tissue sections in pH8 EDTA for 20 min and allow to cool before testing.



Western blot testing of 1) human MCF7, 2) human HeLa, 3) human U-87 MG, 4) rat heart, 5) rat kidney, 6) mouse heart and 7) mouse kidney tissue lysate with Integrin linked ILK antibody. Expected molecular weight: 51-59 kDa.

Description

ILK, also known as Integrin-linked kinase, is a serine-threonine protein kinase. Transduction of extracellular matrix signals through integrins influences intracellular and extracellular functions, and appears to require interaction of integrin cytoplasmic domains with cellular proteins. Integrin-linked kinase (ILK) interacts with the cytoplasmic domain of beta-1 integrin. This gene was initially described to encode a serine/ threonine protein kinase with 4 ankyrin-like repeats, which associates with the cytoplasmic domain of beta integrins and acts as a proximal receptor kinase regulating integrin-mediated signal transduction. Multiple alternatively spliced transcript variants encoding the same protein have been found for this gene. Recent results showed that ILK contains 5 ankyrin-like repeats, and that the C-terminal kinase domain is actually a pseudo-kinase with adaptor function.

Application Notes

Optimal dilution of the Integrin linked ILK antibody should be determined by the researcher.

Immunogen

Recombinant human protein (amino acids M1-K452) was used as the immunogen for the Integrin linked ILK antibody.

Storage

After reconstitution, the Integrin linked ILK antibody can be stored for up to one month at 4°C. For long-term, aliquot and store at -20°C. Avoid repeated freezing and thawing.

