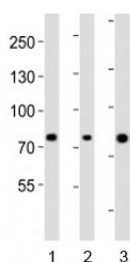


## Integrin beta 8 Antibody (F53040)

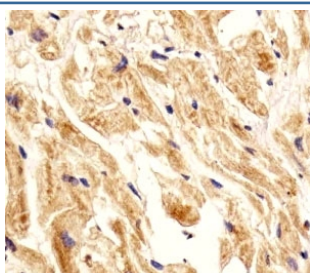
Catalog No.	Formulation	Size
F53040-0.4ML	In 1X PBS, pH 7.4, with 0.09% sodium azide	0.4 ml
F53040-0.08ML	In 1X PBS, pH 7.4, with 0.09% sodium azide	0.08 ml

[Bulk quote request](#)

<b>Availability</b>	1-3 business days
<b>Species Reactivity</b>	Human
<b>Predicted Reactivity</b>	Rabbit
<b>Format</b>	Antigen affinity purified
<b>Clonality</b>	Polyclonal (rabbit origin)
<b>Isotype</b>	Rabbit Ig
<b>Purity</b>	Antigen affinity
<b>UniProt</b>	P26012
<b>Applications</b>	IHC (Paraffin) : 1:25 Western Blot : 1:1000
<b>Limitations</b>	This Integrin beta 8 antibody is available for research use only.



Western blot analysis of lysate from human 1) ovary, 2) placenta and 3) plasma lysate using Integrin beta 8 antibody diluted at 1:1000. Predicted molecular weight: 85/71 kDa (isoforms 1/2).



IHC analysis of FFPE human heart section using Integrin beta 8 antibody; Ab was diluted at 1:25.

## Description

Integrin alpha-V/beta-8 is a receptor for fibronectin.

## Application Notes

Titration of the Integrin beta 8 antibody may be required due to differences in protocols and secondary/substrate sensitivity.

## Immunogen

This Integrin beta 8 antibody was produced from a rabbit immunized with a KLH conjugated synthetic peptide between 197-231 amino acids from the Central region of human ITGB8.

## Storage

Aliquot the Integrin beta 8 antibody and store frozen at -20oC or colder. Avoid repeated freeze-thaw cycles.