

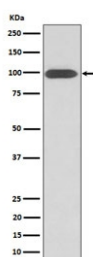
Integrin beta 3 Antibody / ITGB3 [clone 29I49] (RQ8655)

Catalog No.	Formulation	Size
RQ8655	Antibody in PBS with 0.02% sodium azide, 50% glycerol and 0.4-0.5mg/ml BSA	100 ul

Recombinant RABBIT MONOCLONAL

[Bulk quote request](#)

Availability	1-3 days
Species Reactivity	Human
Format	Purified
Clonality	Recombinant Rabbit Monoclonal
Isotype	Rabbit IgG
Clone Name	29I49
Purity	Affinity chromatography
UniProt	P05106
Applications	Western Blot : 1:500-1:2000
Limitations	This Integrin beta 3 antibody is available for research use only.



Western blot testing of human U-87 MG cell lysate with Integrin beta 3 antibody. Predicted molecular weight ~88 kDa but may be observed at higher molecular weights due to glycosylation.

Description

The ITGB3 protein product is the integrin beta chain beta 3. Integrins are integral cell-surface proteins composed of an alpha chain and a beta chain. A given chain may combine with multiple partners resulting in different integrins. Integrin beta 3 is found along with the alpha IIb chain in platelets. Integrins are known to participate in cell adhesion as well as cell-surface-mediated signaling. [Wiki]

Application Notes

Optimal dilution of the Integrin beta 3 antibody should be determined by the researcher.

Immunogen

A synthetic peptide specific to human Integrin beta 3 protein was used as the immunogen for the Integrin beta 3 Antibody.

Storage

Store the Integrin beta 3 antibody at -20oC.