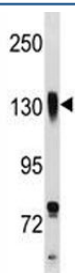


## Integrin beta 1 Antibody / ITGB1 / CD29 (F47197)

Catalog No.	Formulation	Size
F47197-0.4ML	In 1X PBS, pH 7.4, with 0.09% sodium azide	0.4 ml
F47197-0.08ML	In 1X PBS, pH 7.4, with 0.09% sodium azide	0.08 ml

**Bulk quote request**

<b>Availability</b>	1-3 business days
<b>Species Reactivity</b>	Human
<b>Predicted Reactivity</b>	Mouse, Rat, Bovine, Pig, Chicken, Xenopus
<b>Format</b>	Antigen affinity purified
<b>Clonality</b>	Polyclonal (rabbit origin)
<b>Isotype</b>	Rabbit Ig
<b>Purity</b>	Antigen affinity
<b>UniProt</b>	P05556
<b>Applications</b>	Western Blot : 1:1000
<b>Limitations</b>	This Integrin beta 1 antibody is available for research use only.



Integrin beta 1 antibody western blot analysis in NCI-H292 lysate. Predicted molecular weight: 88/130~150 kDa (unmodified/glycosylated).

## Description

Integrins are heterodimeric proteins made up of alpha and beta subunits. At least 18 alpha and 8 beta subunits have been described in mammals. Integrin family members are membrane receptors involved in cell adhesion and recognition in a variety of processes including embryogenesis, hemostasis, tissue repair, immune response and metastatic diffusion of tumor cells. This gene encodes a beta subunit. Multiple alternatively spliced transcript variants which encode different protein isoforms have been found for this gene.

## Application Notes

Titration of the Integrin beta 1 antibody may be required due to differences in protocols and secondary/substrate sensitivity.

## **Immunogen**

A portion of amino acids 759-785 from the human protein was used as the immunogen for this Integrin beta 1 antibody.

## **Storage**

Aliquot the Integrin beta 1 antibody and store frozen at -20oC or colder. Avoid repeated freeze-thaw cycles.