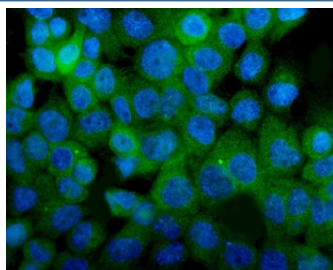


## Integrin alpha 8 Antibody / ITGA8 (RQ7713)

Catalog No.	Formulation	Size
RQ7713	0.5mg/ml if reconstituted with 0.2ml sterile DI water	100 ug

**Bulk quote request**

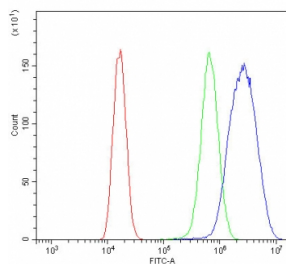
<b>Availability</b>	1-3 business days
<b>Species Reactivity</b>	Human
<b>Format</b>	Antigen affinity purified
<b>Clonality</b>	Polyclonal (rabbit origin)
<b>Isotype</b>	Rabbit IgG
<b>Purity</b>	Antigen affinity purified
<b>Buffer</b>	Lyophilized from 1X PBS with 2% Trehalose
<b>UniProt</b>	P53708
<b>Applications</b>	Western Blot : 0.5-1ug/ml Immunofluorescence : 5ug/ml Flow Cytometry : 1-3ug/million cells Direct ELISA : 0.1-0.5ug/ml
<b>Limitations</b>	This Integrin alpha 8 antibody is available for research use only.



Immunofluorescent staining of FFPE human A431 cells with Integrin alpha 8 antibody (green) and DAPI nuclear stain (blue). HIER: steam section in pH6 citrate buffer for 20 min.



Western blot testing of human HEK293 cell lysate with Integrin alpha 8 antibody. Predicted molecular weight ~117 kDa but may be observed at higher molecular weights due to glycosylation.



Flow cytometry testing of human 293T cells with Integrin alpha 8 antibody at 1ug/million cells (blocked with goat sera); Red=cells alone, Green=isotype control, Blue= Integrin alpha 8 antibody.

## Description

Integrin alpha-8 is a protein that in humans is encoded by the ITGA8 gene. Integrins are heterodimeric transmembrane receptor proteins that mediate numerous cellular processes including cell adhesion, cytoskeletal rearrangement, and activation of cell signaling pathways. Integrins are composed of alpha and beta subunits. This gene encodes the alpha 8 subunit of the heterodimeric integrin alpha8beta1 protein. The encoded protein is a single-pass type 1 membrane protein that contains multiple FG-GAP repeats. This repeat is predicted to fold into a beta propeller structure. This gene regulates the recruitment of mesenchymal cells into epithelial structures, mediates cell-cell interactions, and regulates neurite outgrowth of sensory and motor neurons. The integrin alpha8beta1 protein thus plays an important role in wound-healing and organogenesis. Mutations in this gene have been associated with renal hypodysplasia/aplasia-1 (RHDA1) and with several animal models of chronic kidney disease. Alternate splicing results in multiple transcript variants encoding distinct isoforms.

## Application Notes

Optimal dilution of the Integrin alpha 8 antibody should be determined by the researcher.

## Immunogen

E. coli-derived recombinant human protein (amino acids E347-D964) was used as the immunogen for the Integrin alpha 8 antibody.

## Storage

After reconstitution, the Integrin alpha 8 antibody can be stored for up to one month at 4oC. For long-term, aliquot and store at -20oC. Avoid repeated freezing and thawing.