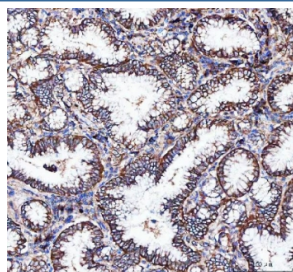


## Integrin alpha 3 Antibody / ITGA3 (RQ7004)

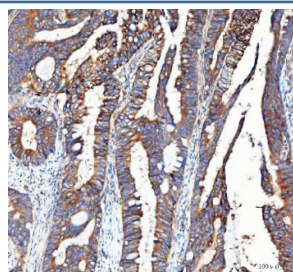
Catalog No.	Formulation	Size
RQ7004	0.5mg/ml if reconstituted with 0.2ml sterile DI water	100 ug

**Bulk quote request**

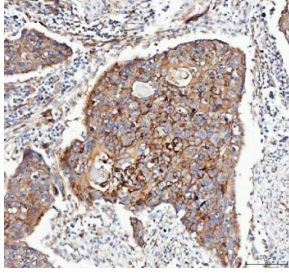
<b>Availability</b>	1-3 business days
<b>Species Reactivity</b>	Human
<b>Format</b>	Antigen affinity purified
<b>Clonality</b>	Polyclonal (rabbit origin)
<b>Isotype</b>	Rabbit IgG
<b>Purity</b>	Antigen affinity purified
<b>Buffer</b>	Lyophilized from 1X PBS with 2% Trehalose
<b>UniProt</b>	P26006
<b>Applications</b>	Western Blot : 0.5-1 ug/ml Flow Cytometry : 1-3ug/million cells Immunohistochemistry (FFPE) : 2-5ug/ml Immunofluorescence : 5ug/ml Direct ELISA : 0.1-0.5ug/ml
<b>Limitations</b>	This Integrin alpha 3 antibody is available for research use only.



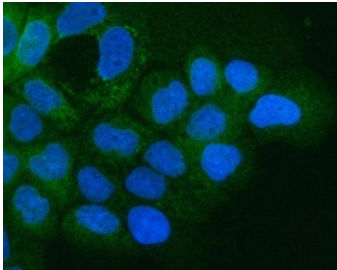
IHC staining of FFPE human lung adenocarcinoma tissue with Integrin alpha 3 antibody. HIER: boil tissue sections in pH8 EDTA for 20 min and allow to cool before testing.



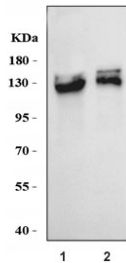
IHC staining of FFPE human colorectal adenocarcinoma tissue with Integrin alpha 3 antibody. HIER: boil tissue sections in pH8 EDTA for 20 min and allow to cool before testing.



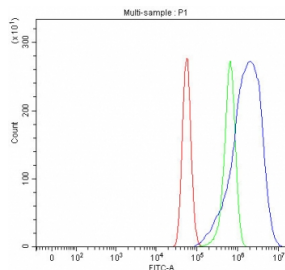
IHC staining of FFPE human esophageal squamous carcinoma tissue with Integrin alpha 3 antibody. HIER: boil tissue sections in pH8 EDTA for 20 min and allow to cool before testing.



Immunofluorescent staining of FFPE human A431 cells with Integrin alpha 3 antibody (green) and DAPI nuclear stain (blue). HIER: steam section in pH6 citrate buffer for 20 min.



Western blot testing of human 1) U-87 MG and 2) A431 cell lysate with Integrin alpha 3 antibody. Expected molecular weight: 119-150 kDa depending on glycosylation level.



Flow cytometry testing of human U-87 MG cells with Integrin alpha 3 antibody at 1ug/million cells (blocked with goat sera); Red=cells alone, Green=isotype control, Blue=Integrin alpha 3 antibody.

## Description

ITGA3 (INTEGRIN, ALPHA-3), also called CD49C, VLA3 or GAPB3, is a protein that in humans is encoded by the ITGA3 gene. It is an integrin alpha subunit which is also a member of the family of cell surface adhesion molecules. This gene is mapped to chromosome 17 and its exact cytogenetic location is 17q21.33. ITGA3 makes up half of the  $\alpha 3 \beta 1$  integrin duplex that plays a role in neural migration and corticogenesis together with beta-1 subunit. A functional link between DAB1 phosphorylation and ITGA3 signaling drives the timely detachment of migrating neurons from radial glial fibers. Expression of human ITGA3 increased the infectivity of virus for Chinese hamster ovary cells. ITGA3 also contains 13 potential N-glycosylation sites, 2 potential cleavage sites, and the 7 N-terminal repeating units characteristic of ITGAs. Recombinant ITGA3 is expressed as a 150-kD protein as the same size as the native protein by the western blot analysis.

## Application Notes

Optimal dilution of the Integrin alpha 3 antibody should be determined by the researcher.

## Immunogen

Recombinant human protein (amino acids L96-L324) was used as the immunogen for the Integrin alpha 3 antibody.

## Storage

After reconstitution, the Integrin alpha 3 antibody can be stored for up to one month at 4oC. For long-term, aliquot and store at -20oC. Avoid repeated freezing and thawing.