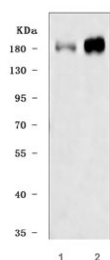


## Insulin receptor substrate 2 Antibody / IRS2 (RQ7182)

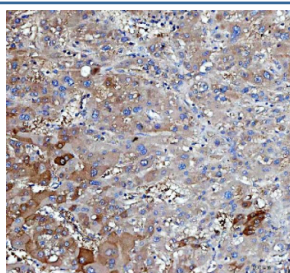
Catalog No.	Formulation	Size
RQ7182	0.5mg/ml if reconstituted with 0.2ml sterile DI water	100 ug

**Bulk quote request**

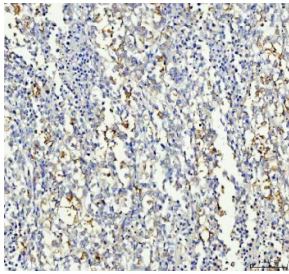
<b>Availability</b>	1-3 business days
<b>Species Reactivity</b>	Human, Rat
<b>Format</b>	Antigen affinity purified
<b>Clonality</b>	Polyclonal (rabbit origin)
<b>Isotype</b>	Rabbit IgG
<b>Purity</b>	Antigen affinity purified
<b>Buffer</b>	Lyophilized from 1X PBS with 2% Trehalose
<b>UniProt</b>	Q9Y4H2
<b>Applications</b>	Western Blot : 0.5-1ug/ml Immunohistochemistry : 2-5ug/ml Direct ELISA : 0.1-0.5ug/ml
<b>Limitations</b>	This Insulin receptor substrate 2 antibody is available for research use only.



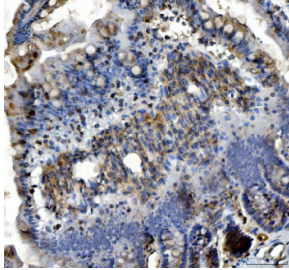
Western blot testing of human 1) HeLa and 2) SH-SY5Y cell lysate with Insulin receptor substrate 2 antibody. Predicted molecular weight ~137 kDa but it may be observed at up to ~190 kDa due to phosphorylation.



IHC staining of FFPE human liver cancer tissue with Insulin receptor substrate 2 antibody. HIER: boil tissue sections in pH8 EDTA for 20 min and allow to cool before testing.



IHC staining of FFPE human lung cancer tissue with Insulin receptor substrate 2 antibody. HIER: boil tissue sections in pH8 EDTA for 20 min and allow to cool before testing.



IHC staining of FFPE rat colon tissue with Insulin receptor substrate 2 antibody. HIER: boil tissue sections in pH8 EDTA for 20 min and allow to cool before testing.

## Description

Insulin receptor substrate 2 (IRS2) is a protein that in humans is encoded by the IRS2 gene. It is mapped to 13q34. This gene encodes the insulin receptor substrate 2, a cytoplasmic signaling molecule that mediates effects of insulin, insulin-like growth factor 1, and other cytokines by acting as a molecular adaptor between diverse receptor tyrosine kinases and downstream effectors. The product of this gene is phosphorylated by the insulin receptor tyrosine kinase upon receptor stimulation, as well as by an interleukin 4 receptor-associated kinase in response to IL4 treatment. IRS2 is expressed in many cells, it may be essential for signaling by several receptor systems.

## Application Notes

Optimal dilution of the Insulin receptor substrate 2 antibody should be determined by the researcher.

## Immunogen

Recombinant human protein (amino acids R83-E1338) was used as the immunogen for the Insulin receptor substrate 2 antibody.

## Storage

After reconstitution, the Insulin receptor substrate 2 antibody can be stored for up to one month at 4°C. For long-term, aliquot and store at -20°C. Avoid repeated freezing and thawing.