

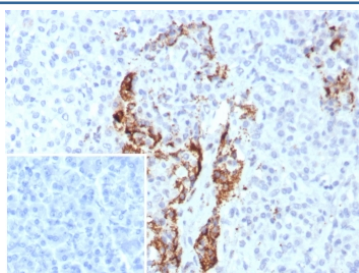
## Insulin Antibody / INS [clone rIRDN/8546] (V4156)

Catalog No.	Formulation	Size
V4156-100UG	0.2 mg/ml in 1X PBS with 0.1 mg/ml BSA (US sourced), 0.05% sodium azide	100 ug
V4156-20UG	0.2 mg/ml in 1X PBS with 0.1 mg/ml BSA (US sourced), 0.05% sodium azide	20 ug
V4156SAF-100UG	1 mg/ml in 1X PBS; BSA free, sodium azide free	100 ug

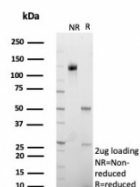
Recombinant **MOUSE MONOCLONAL**

[Bulk quote request](#)

<b>Availability</b>	1-3 business days
<b>Species Reactivity</b>	Human
<b>Format</b>	Purified
<b>Clonality</b>	Recombinant Mouse Monoclonal
<b>Isotype</b>	Mouse IgG2a, kappa
<b>Clone Name</b>	rIRDN/8546
<b>Purity</b>	Protein A/G affinity
<b>UniProt</b>	P01308
<b>Localization</b>	Cytoplasm
<b>Applications</b>	Immunohistochemistry (FFPE) : 0.1-0.2ug/ml (No special pretreatment is required for staining of FFPE tissue)
<b>Limitations</b>	This Insulin antibody is available for research use only.



IHC staining of FFPE human pancreas tissue with Insulin antibody (clone rIRDN/8546). Inset: PBS used in place of primary Ab (secondary Ab negative control). HIER: boil tissue sections in pH 9 10mM Tris with 1mM EDTA for 20 min and allow to cool before testing.



SDS-PAGE analysis of purified, BSA-free Insulin antibody (clone rIRDN/8546) as confirmation of integrity and purity.

## Description

Recognizes a polypeptide which is identified as insulin, a 51-amino acid polypeptide composed of A and B chains connected through the C-peptide. Proinsulin, which has very little biological activity, is cleaved by proteases within its cell of origin into the insulin molecule and the C-terminal basic residue. Insulin enhances membrane transport of glucose, amino acids, and certain ions. It also promotes glycogen storage, formation of triglycerides, and synthesis of proteins and nucleic acids. Deficiency of insulin results in diabetes mellitus. The main storage site for insulin is the pancreatic islets. Antibodies to insulin are important as beta-cell and insulinoma marker.

## Application Notes

Optimal dilution of the Insulin antibody should be determined by the researcher.

## Immunogen

Recombinant full-length human Insulin protein was used as the immunogen for the Insulin antibody.

## Storage

Aliquot the Insulin antibody and store frozen at -20oC or colder. Avoid repeated freeze-thaw cycles.